

Milk Watch Milking System



Milkwatch system monitors essential milking functions such as pulsation control and milking machine takeoff. Provides valuable information concerning milk yield, milk flow rate, milking time, and milk & wash temperatures as well as conductivity for cows, goats, and sheep.

The 7/8" OD sensor is also suited for use in milking of small ruminant animals such as sheep and goats. Linked to a PC, the Milk Watch software presents clear data concerning milk quality, animal health, and fertility.

The *Milk Watch system* integrates with *Milk Watch ID system* for a complete herd management package. The wrist watch style receiver/transmitter can detect both stall address and animal ID. Animal milk yield can be accurately and reliably obtained with significantly reduced infrastructure cost. Portal and walkover ID antennas are also available.

Features:

- Free flow sensor for 5/8" or 3/4" hose
- Milk flow rate and total yield
- Milk conductivity and milk temperature
- Adjustable time delay
- Clear kickoff indication and milk evacuation
- Adjustable pulsation speed and ratio
- Auto or manually activated stimulation
- Manual/automatic machine removal
- Parlor/sort gates can be operated from control box
- Continuous monitoring of cleaning parameters
- Yield and conductivity data can be transferred to PC
- Cow information is available from software
- Automatic alarm codes at cow side
- Advanced event planning
- Interfaces with DairyComp™

Milk Watch Detacher System Part# 46980

SYSTEM INCLUDES:	PART#
Sensor	46981
Control box	46981-1
Shutoff	46962
(2) Pulsator/Switch valve	23057
SS vacuum cylinder	47446-A

*Order left or right hand sensor bracket separately.

Milk Watch Components

DESCRIPTION	PART#
Milk Watch sensor	46981
Milk Watch control box	46981-1
Milk Watch control box and sensor	46982
Milk Watch connect box for group settings	46982-1
Milk Watch sensor bracket (left)	46982-4
Milk Watch sensor bracket (right)	46982-5
Milk Watch data server (complete)	46983
Milk Watch ID activator and antenna	46985
Milk Watch ID watch and strap	46986
Milk Watch strap only	46986-5
Milk Watch ID receiver	46986-1
RFID tag implant chip	46995
RFID gun for implanting chip	46995-1
RFID needles for gun	46995-2
Ear Tag with half duplex RFID chip	46995-3
Leg Band less chip	46995-4
Leg Band with RFID chip	46995-5

Milk Watch Management Software Packages:

PACKAGE DESCRIPTION	PART#
Activity	46990-1
Agenda	46990-2
Engineer tools	46990-3
Lactation	46990-4
Milk	46990-5
Cow traffic	46990-7
Auto parlor gate IMB	46990-8
Concentrated feed	46990-9
Feed IMB per stall	46990-A
Milk Watch control IMB	46990-B

EcoFlow Milk Meter

Features:

- Milk Yield
- Milk flow rate
- Milk and Water temperature
- Milking time
- Electrical Conductivity - Mastitis Detection

Technical Features:

- Free flow design - Maintenance Free
- Ability to measure small milk quantities
- Standalone or working with Automatic ID
- In-Post ID from any MPC



EcoFlow Milk Meter

DESCRIPTION	PART#
Control, Sensor, Cylinder, Pulsator, Shutoff	47050
Control and Sensor Only	47051
Control Box Only	47052
Flow Sensor	47053
RS485 Network Adapter	47054
Sensor Bracket Left	47055
Sensor Bracket Right	47056

Maxi-Flow Automatic Detacher

Complete Unit - Part# 46965

Maxi-Flow Control Box Only - Part# 46951-C

Complete milking points include digital detacher control, pulsator, milk flow sensor, switching valve, retract cylinder, and milk shut-off valve. Zero restriction on fastest and heaviest milking cows will allow quick & even milk harvest. Pulsation is controlled by the detacher, extending liner and pulsator life. Milk sweep, cluster release, vacuum on delay, retract delay, stimulating pulsation, and flow rate characteristics are fully programmable with the remote handset. Uses 18 volts.

- Works with both air pressure and vacuum
- Pulsation stops on retract (stimulation on demand)
- Milk sweep, cluster release, delayed vacuum-on and retract. Can be used to update existing systems



18/24 Volt AC/DC Power Supply

One required per eight milking points. See wiring diagram on page 129.

Part# 47483-A



12 Volt DC Power Supply

One required per eight milking points

Part# 47483

Programming Handset Part# 46955

The programming handset uses infrared technology to communicate with the detacher control. All adjustments to the milking point including pulsation, milk flow rate, attach vacuum delay, gentle retract, milk sweep, vacuum or air pressure are adjusted with the remote handset.



Safgard D2 Detacher System

Safgard D2 Detacher System

One Control to Run Two Stalls!

Designed so all settings for all detachers from milking delays to detach signals, can be changed in seconds with a keystroke at your computer.

No need to open each stall's control box.

You decide settings to optimize milking and fine-tune settings for your herd.

Easier installation with one control for two stalls.

Priced to sell to all size dairies.

Safgard D2 Detacher Complete System

2 Stalls with Cylinders, Shut Off/Sensor, Pulsator Valve, Control Box, Button Box and Back Clamps

Part# 47460



Safgard D2 Detacher System

SYSTEM INCLUDES:	PART#
Safgard D2 Tap Switch Box Assembly	47461
Safgard D2 Back Clamp for Tap Box	47461-1
Safgard D2 Tap Switch Amber w/ Cable	47461-2
Safgard D2 Tap Switch Blue w/ Cable	47461-3
Safgard D2 Master Control Box	47462

Miscellaneous/Generic Detacher Parts



Milk Hose Shut-Offs
Molded Poly Air Powered
Milk Hose Shut-Off

DESCRIPTION	PART#
Air Pressure Shut-Off Valve	47469
Adjusting Strap for 7/8" Hose	47469-1
Rubber boot cover for 5/8" Hose	47469-2
3/4" OD Poly Tubing per foot	48261

(1/4" OD Poly Fitting Included)



Large Capacity 3/4" (19mm) Vacuum Operated Diaphragm Shut-Off Valve
Part# 46960

Large 3/4" I.D. allows for bigger volumes of milk from larger outlet claws. Replacement black diaphragm
Part# 46960-1



Waikato™ Sensor/Shut-Off Valve
Part# 46962
 Clear Diaphragm Only
Part# 46962-1

SS Vacuum Operated Clamp Valve
Part# 47486
 Replacement Diaphragm
Part# 47477



Single Diaphragm Valve Afimilk™ Style
Part# 46895
 Diaphragm
Part# 46895-1



Safgard™ Parlor PTO Sensor
Part# 46881-6

DESCRIPTION	PART#
Shut-off diaphragm	46881-0
Flow sensor cap	46881-1



GDT Main On-Off

4 Way Clippard Air Valve Assy
Part# 47466



Vacuum Operated Clamp Valve
Part# 47491

For 5/8" - 7/8" rubber, plastic & silicone hose. New piston style design works on virtually any size hose.

DESCRIPTION	PART#
Replacement strap	47491-1
Replacement seal ring	47491-2



Westfalia™, Bou-matic™, & Beco™ Replacement Diaphragm

Made of high quality silicone material. Out performs original equip. diaphragm. (Ask about quantity discounts.)

Part#47492



Silicone Line Gasket
Part# 47492-1

2"x32" SS Vac & Air Retract Cylinder
Part# 47446-A - Vacuum Cylinder w/ rope
Part# 47450 - Air Cylinder w/ chain

Copy for Westfalia™ ACR 37" SS Vac Retract Cylinder w/ Rope
Part# 47493-A

Copy for DeLaval™ SST#2™ SS Vac Retract Cylinder w/ Rope
Part# 47488-A

Cylinder Bottom for DeLaval™ SST#2 And Bou-matic™ Cylinders
Part# 47488-C

Copy for DeLaval™ SST#2™ SS Vac Retract Cylinder w/ SS Chain
Part# 47488-B

Piston Replacement for DeLaval SST#2 SS Cylinder
Part# 47488-D

Seal Replacement for DeLaval SST#2 SS Cylinder
Part# 47488-E



Stainless Steel Detacher Chain
Sold by the ft.
Part# 47494



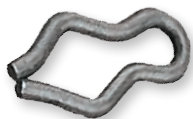
Standard SS Snap 1/4"
Part# 47494-2



Split Link
Part# 47494-1



Large split link
Part# 47494-3

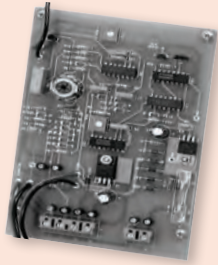


Breakaway clip
Part# 47494-4

GEA™ Surge™ Westfalia™ Takeoff Generic Replacement Parts

Westfalia™ ACR Board Replacement Part# 47493

This is a drop in replacement for the Westfalia™ ACR. Adjust to standard factory settings, or dairymans preferred settings.



Water Tight Toggle Switch Cover Part# 47444-7



Toggle Switch Cover Part# 46930



Plunger Assy Replacement for Westfalia™ VisoFlo™ Sensor Part# 46971-2



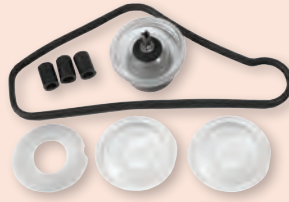
Plunger Assy Replacement for Westfalia™ Metatron™ Sensor Part# 46971-1



Westfalia™ Metatron™ Meter Replacement Service Kit Part# 46971

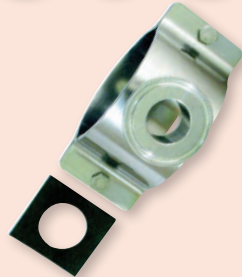
Kit Includes:

QTY	DESCRIPTION
1	Lid gasket
1	Plunger assy w/ diaphragm
3	Sealing caps
2	Diaphragms



SS Replacement 3" Milk Line Clamp for Westfalia™ VisoFlo™ Or Metatron™ Meters

Complete w/ gasket - Part# 46971-3
3" Gasket Only - Part# 46971-4



Surge™ VSO Sensor Body Replacement Part# 46970

Direct replace. for VSO sensor top.



Surge™ VSO Plunger For VSO Float Part# 46970-3



Surge™ VSO Cap & Stem For VSO Float Part# 46970-4

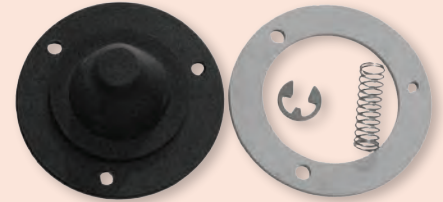


Surge™ VSO Sensor Base Replacement Part# 46970-1

Direct replacement
for VSO sensor base.
Gasket only for VSO -
Part# 46970-2



Surge™ Optic™ Sensor Replacement Kit Part# 46972



Surge™ Omni™ Cylinder Replacement Kit Part# 46973



Surge™ Omni™ Vacuum Solenoid Replacement Kit Part# 23048



Safgard™ Automatic Detacher/Parts Part# 47444

The Safgard Automatic detacher is an excellent stand alone detacher for commercial installations. 1,000's in use world wide. Stainless steel control box and retract cylinder. Easy access service.



Replacement Parts

DESCRIPTION	PART#
Toggle switch	47444-3
Control board	47444-4
Buss fuse 1.5 amp	47444-5
Half boot toggle switch	47444-7
Light bulb	47444-9
3-Way solenoid	47445-7
Neoprene cup for piston	47446-2
Hook for cable	47446-8
Seal only for 2" vac-cylinder	47446-9
2" SS Cyl. Complete	47446-A
Flow sensor complete	47447
Diaphragm for flow sensor	47447-3

Bou-matic™ & DeLaval™ Takeoff Generic Replacement Parts

Stainless Cover & Connector Board Adapts to SST#2™
5.2, 5.3, or 6.1 boards
Part# 47488



Keypad w/Connector Board Adapts to SST#2™
5.2, 5.3, or 6.1 boards
Part# 47488-1

Reed Switch Replacement for SST#2™ and ARM Takeoffs
Part# 47488-2



DeLaval™ Replacement Parts For SST #2

Sensor Diaphragm
Part# 47488-4



Magnetic Plate
Part# 47488-6



Sensor Cover Gasket
Part# 47488-5



Sensor Jar Replacement for DV300 and SST#2™
Part# 47490



5/8" Vertical Sensor Lid
Part# 47490-1

DeLaval™ Milk Master™ Takeoff Parts Replacement

Rubber Rebuild Kit for Sensor
Part# 47489



Rubber Rebuild Kit for Amplifier
Part# 47489-4



Filter (Inc Clip)
Part# 47489-1



Outer Seal for Motor
Part# 47489-2



Inner Seal for Motor
Part# 47489-3



DeLaval™ Takeoff Generic Replacement Parts

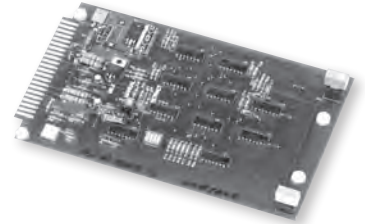


MM25 Gasket
Part# 47489-5



Wear Plate for ARM I or ARM II Takeoff Linkage
Part# 47488-7

Bou-matic™ 2000V/2100 Board Replacement
Part# 47495



This is a drop-in replacement for the Bou-Matic™ 2000V/2100 detacher. Adjust to standard factory settings, or dairymans preferred settings.

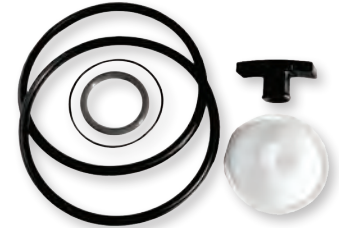
Service Kit Replacement for Bou-matic™ Perfection Meter
Part# 47496

Parts Include: White diaphragm, large seal (2) required, red silicone seal, rubber plug, small thin black "O"ring, SS plate, SS insert, SS spring, plastic threaded nut, and SS bolt.



Service Kit Replacement for Bou-matic™ Perfection Meter
Part# 47496-1

Parts Include: White diaphragm, large seal (2) required, red silicone seal, rubber plug, and small thin black "O"ring.



Replacement Parts for Bou-matic™ Perfection Meter

DESCRIPTION	PART#
Diaphragm only	47496-2
Diaphragm Assy. w/ screws	47496-3

Plunger Assy Replacement for Bou-matic™ New Style Sensor
Part# 47497

DESCRIPTION	PART#
Plunger only	47497-1
Diaphragm only	47492



Solenoid Valve Replacement for Bou-matic™ 2100 and 2101
Part# 47495-1



Solenoid Valve Replacement for Bou-matic™ 3000 series
Part# 47495-3



Solenoid Valve Replacement for Bou-matic™ for 2000v and 2000vm
Part# 47495-2



Waikato Mark-V Milk Meters

- Weighing device for parlor or stanchion barns
- DHIA approved
- V-block or rapid clamp mounting
- Dual scale in pounds and kilograms

65 LB. Waikato Milk Meter
with Standard V-Block Mounting - 30 kg.
Part# 46224

92 LB. Waikato Milk Meter
with Standard V-Block Mounting - 42 kg.
Part# 46218

4.5 Liter Waikato Milk Meter for Goats
with Standard V-Block
Part# 46221

92 LB. Waikato Milk Meter with Speed Sampler (less wedge mount)
Part# 46215

92 LB. Waikato Speed Sampler Upgrade Kit
Part# 46216

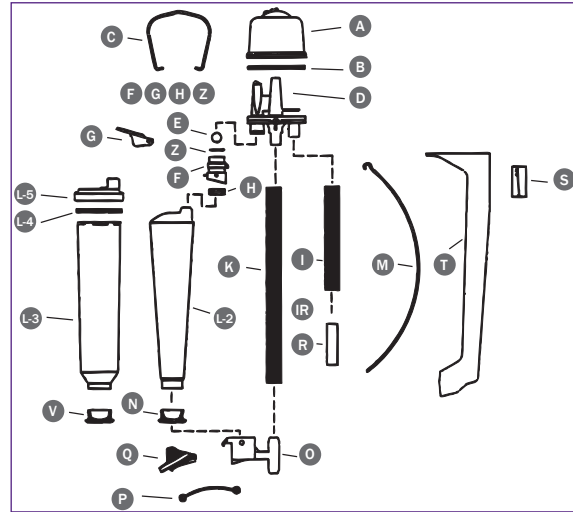
42 KG. Waikato Milk Meter with Speed Sampler (less wedge mount)
Part# 46217

42 KG. Waikato Speed Sampler Upgrade Kit
Part# 46217-1

Standard Plastic V-Mount Bracket Complete - Part# 46252

SS Notched Meter Bracket w/Flat Plate
Part# 46354

SS Curb Style Meter Bracket Rounded
Part# 46355



Milk Meter Parts

PICTURE	DESCRIPTION	PART#
A	Cover only	46226
B	Cover seal	46228
C	Cover clip	46229
D	Base assembly	46225
D-1	Goat base assy.	46223
E	Stainless steel ball	46232
FGH	Ball cage assembly	46227
G	Flask depressor	46233
H	Valve housing gasket	46231
IJ	Check valve assembly - N/A	46251
IR	3/4" SS connector	46251-2
K	Hose	46246
L-1	Goat flask	46222
L-2	Flask - 65 lb.	46236
L-3	Flask for 92 lb. meter	46219
L-4	Top seal for 92 lb. meter	46219-2
L-5	Cover for 92 lb. meter	46219-1
M	Flask wires (pair)	46244
N	Bung - open flask (65)	46238
N	Bung - open flask (92 lb.)	46238-1
O	Tap housing	46243
P	Tap strap	46258
Q	3 way tap	46259
S	Wedge block	46253
T	Bracket	46235
V	Bung - closed flask	46239
V	Bung - closed flask (92 lb.)	46239-1

WAIKATO™ E-Z OFF Takeoff

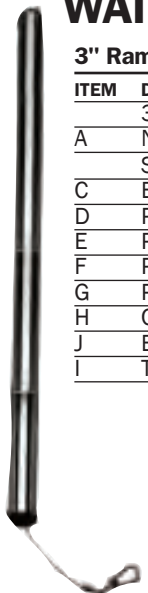
3" Ram (Old Style - Not Stainless Steel) Parts

ITEM	DESCRIPTION	PART#
	3" RAM complete	47423-1
A	Nipple bracket	47398
	SS Vac Cylinder with rope	47446-A
C	Bayonet bracket	47399
D	Pan head screw	47400
E	Piston Backup Washer	47424
F	Piston seal	47401
G	Piston assembly (E,F,G)	47417
H	Cord	47416
J	Bayonet insert assembly	47418
I	T.C.R. cluster clip	47402

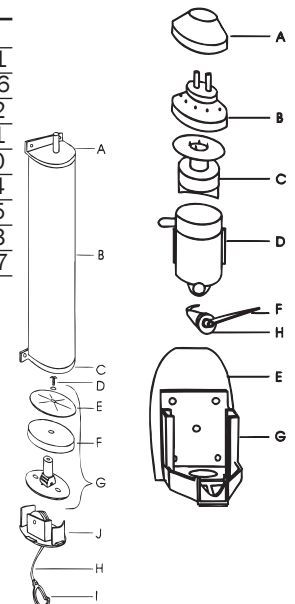
Waikato E-Z OFF Complete Parlor Unit
Part# 47420

Teat Cup Initiator Parts

ITEM	DESCRIPTION	PART#
	Initiator sensor complete	47421
A	Cover	47396
B	Valve head	47412
C	Float	47411
D	Body	47410
E	Bridle	47414
F	Float lifting lever and bung	47415
G	Bracket	47413
H	Bung	47397



Vacuum operated, no extra power source is required. Simple to operate in either automatic or manual mode. It detaches when the milk flow drops below 1/2 lb./min.



Detachers Meters Pasteurizers & Feeders

Safgard™ Home Pasteurizer

MODEL	TEMP.	QTS.	VOLTAGE	PART#
P3000	Single	8	110V	26710
P3000	Single	8	220V	26710-1
P3000	Dual	8	110V	32846
P3000 SS	Single	8	110V	26705

*P3000 SS has Stainless Steel Inside Pail Only



Home Pasteurizer Parts

DESCRIPTION	PART#
Outside cover knob	26718
Outside cover	26717
Outer container	26741
Outside handles	26763
Intake hose	26764
Connector outlet hose	26756
Fiber gasket for connector	26756-1
Outlet hose	26755
Cover lock	26709
Cover (milk pail)	26716

DESCRIPTION	PART#
Lid gasket for inner pail	26754
Milk pail (Aluminum)	26740
Milk pail (SS w/ cover, gskt)	26739
Number 2 stopper	26758
110V element	26759
220V element	26759-A
Gasket heating element	26759-1
Resistor (220V)	26760-A
Toggle switch	26743
Thermostat	26752
Buzzer	26760

EleCrem - Electric Cream Separators

MODEL	QTS./HR.	QTS./STORAGE	PART#
EL-I	132	10½	46282
EL-III	332	26½	46283-1

Note: Larger sizes available



Electric Cream Separators

MODEL	GAL/HR	BOWL CAPACITY	PART#
Mod 18	25	3 gal	46289
Mod 19	25	3 gal	46288
Mod 500	132	NA	46290

- Separates milk into cream and skimmed milk
- Separation of cream from skimmed milk with simultaneous removal of contaminants
- All parts made of metal, except Mod 19 made of food grade plastic
- Mod 500 is 220V and euro electric plug, need voltage converter in the USA, 250 watts
- Mod 18 and 19 either 120V US or 220V Euro plug



Safgard™ Pasteurizers for Calf Milk/Human Consumption

Safgard™ Pasteurizers For Calf Milk

Pasteurizers to process sick cow, fresh cow, and colostrum milk into usable calf milk feed. Why throw away milk that can be used to improve the health and survival of the next generation of herd replacement heifers.

Advantages:

- Stainless steel construction to 3A standards
- Cost savings on powdered milk
- Reduction of medicines
- Heat exchanger in the tank walls
- 45 RPM agitator with stainless steel cover
- Spray ball included for tank washing
- Available extras: milk pump / wash pump with hoses instead of agitator Processing automation PLC computer for manual and automatic processing. Automatic electric heating and cooling valves

55 Gallon Economy Calf Milk Pasteurizer

Part# 80060

Options Include:

- Chart recorder
- Air cavity heater
- Variable speed milkpump
- Plate heat exchanger

Safgard™ Pasteurizers For Human Consumption

Same features and advantages as our calf milk pasteurizer. Includes a variable temperature and speed airspace heater with filter, a vertical leak detector valve. Unit also includes recorder with 2 pens and 2 temperature transmitters for PMO compliance and fittings needed for these sensors and recorders.

SIZE GAL.	CALF MILK	HUMAN CONSUMPTION
	PART#	PART#
45	80070	80070-H
90	80080	80080-H



Part# 80060-H



Part# 80070-H

Speed King® Egg Candler

Part# 50001

- Green Filtered light (Removable filter)
- White light (Filter removed)
- Prefocused
- Hi-Low Beam Switch

DESCRIPTION	PART#
Green filter lens	50016
Switch only for 32A	50018
Bulb only for 32A	50021
New LED bulb	50014



Detachers Meters Pasteurizers & Feeders

HTST Pasteurizer For Calf Milk MODS

Advantages:

- Continuous processing
- Energy efficient regeneration plate section
- Skid mounted for easy installation
- Best price for 400 Gal/HR and higher

HTST Pasteurizer For Calf Milk

Advantages:

- Meets US sanitary standards
- 3-A and PMO compliant units available for human consumption
- All stainless steel mounting construction
- Processor controlled pasteurizing with recorder/controller
- Can pasteurize liquids other than milk
- Extra cooler section available for bottling cold products

Model A HTST Pasteurizer

DESCRIPTION	PART#
100 GPH	80150
200 GPH	80151
300 GPH	80152
500 GPH	80153
Upgrades Available	
Automated Inlet Valve	80154
All SS Plate heat exchanger	80155
Full automated wash/ batch unit	80156

Leak Detector Plug Valves

DESCRIPTION	PART#
1½" Horizontal Tri-Clamp	80075
1½" Vertical Tri-Clamp	80075-1
2" Horizontal Tri-Clamp	80076
2" Vertical Tri-Clamp	80076-1



Model A HTST Pasteurizer

Model S HTST Pasteurizer

DESCRIPTION	PART#
300 GPH	80160
600 GPH	80161
800 GPH	80162
1000 GPH	80163
1500 GPH	80164
2000 GPH	80165
Upgrades Available	
Automated Inlet Valve	80166
All SS Plate heat exchanger	80167
Full automated wash/ batch unit	80168



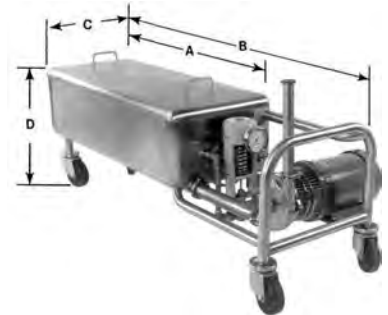
Model S HTST Pasteurizer

Safgard™ Portable Automated One or Two-Tank CIP Systems

Safgard™ Portable CIP Tank All Stainless Steel PRW Series

Series PRW (shown on right) is a sanitary CIP solution tank portable to move right up to your jobs. Equipped with a pump and steam regulator you have a basic CIP system. Low models roll under conveyors and permit gravity feed back (no return pump needed). Can be sized and provided with specified degrees of automation.

MODEL GALLONS	INVENTORY NUMBER		DIMENSIONS INCHES				CAPACITY GALLONS	WEIGHT POUNDS
	TANK	COVER	A	B	C	D		
PRW-40	30227	30230	43	63	18	20.5	40	170
PRW-60	30228	30233	50.5	70.5	24	20.5	60	190
PRW-75	30229	30233	50.5	70.5	24	23	75	245
PRW-100	30231	30233	50.5	70.5	24	28.5	100	280
PRW-150	30232	30234	62.5	82.5	24	32.5	150	340



Safgard™ Portable Automated Two-Tank CIP Cart/System

This all Stainless Steel portable and automated Clean-In-Place CIP cart is the perfect solution for tank cleaning needs of microbreweries, wineries, smaller distillers and other mid-sized tank application industries. The cart comes equipped with two 36 gallon Stainless tanks for separate wash and caustic rinse compartments. The CIP process is made incredibly easy with pre-programmed PLC or standard wash controller. PLC gives digital pre-programming to set cycle times, transitions, etc. Ultimately becomes a single button command operation.

Portable CIP Cart Systems

DESCRIPTION	PART#
Portable One Tank CIP	80180
Portable Two Tank CIP	80181

Advantages:

- Stainless steel construction to 3A standards
- Cost and time savings on washing labor
- Easy portability to set up washing multiple tanks
- Simple and effective design easy use
- Spray ball included for tank washing
- Available extras: milk pump / wash pump with hoses instead of agitator
- Optional: Processing automation PLC computer for manual and automatic processing.



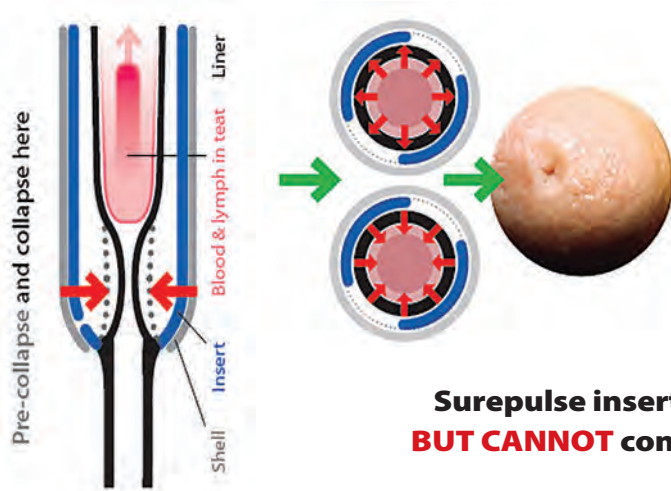
Introducing SurePulse™ and Calf 35™ Technologies

SurePulse™ Introduction

Concept of pulsation revolutionizing animal health results, improved udder health, reduced cell count and mastitis, and overall improved milking productivity.

SurePulse™ includes plastic inserts placed between the shell and liners to control the movement of liner walls.

- Inserts help improve pulsation (curves)
- Limit liner distention/ erratic open and close
- Softer liner movement, reduced ballooning
- Gives control over collapse position on teat end



**Surepulse inserts control the movement of the liner wall...
BUT CANNOT control vacuum fluctuations or close the liner...
... however Calf 35 can!**

Calf 35™ Introduction

Calf 35™ complete pulsation system is a modern and revolutionary designed system that delivers incredible results in milking productivity and speed and vast improvements in animal health and longevity. The system is designed to take control of pulsation and liner movement for end result that emulates a suckling calf. It uses low vacuum at 10.2 inches Hg to open liners and remove the milk from the teat end and positive pressure (compressed air) to close the liners.

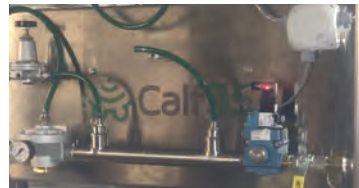
Calf 35™ ideally runs at 80-90 cycles per minute significantly improving milk flow rates. Like SurePulse, Calf 35™ includes plastic inserts placed between the shell and liners to control the movement of liner walls.

Calf 35™ Features and Benefits

- Faster milking with 80-90 cycles per minute
- Almost no cup slip milking at 35-36 kPa or 10.2 in. Hg vacuum
- Improved physiology and psychology of animal speeds up the milking process.
- Complete control over movement on the liner including rate of movement and pressures applied
- Never uses pressure outside those of nature
- Excellent teat health
- Significant financial savings in animal health
- Better animal longevity, less cow replacement
- Less stress and creates more pleasant environment for animals and workers

Calf 35™ Equipment Parts

DESCRIPTION	PART#
Calf 35 System Complete	47700
Surepulse US22A Round Inflation	47710
Surepulse US33A Triangular Inflation	47711
Surepulse Shell AMS-1	47712
Surepulse Pink Insert	47713
Surepulse Silver Insert	47714
Surepulse Short Air Tube	47715



Calf 35 muzzle – it has vacuum and puff all at once

Calf 35 dedicated electronic milking point controller



Safgard™ Bulk Milk Mover

40 Gallon - Part# 80110 (Basic Cart)
70 Gallon - Part# 80111 (Basic Cart)

Schlueter's bulk milk mover shortens the time normally taken for the heavy physical labor of feeding calves. The tricycle wheel base and 2400 pound capacity wheel bearings make easy work of heavy loads on rough terrain or inclines. Accurate dispensing pump and nozzle assembly allows for precise feeding in minimal time. Fast & accurate delivery of raw milk or milk replacer.

Features:

- Made in America
- SS tank body and cover assembly
- Large sure-grip tires and wheels
- Easy-turn tricycle base
- Narrow design fits through standard 36" door
- Variable speed mixer for milk replacer or fresh milk
- Adjustable electric drive

Safgard Bulk Milk Mover Options

DESCRIPTION	PART#
Electric drive package	80111-1
Agitator assembly	80111-3
Heater for pasteurizer	80111-4
Special metering nozzle	80111-6



MilkCab Mobile Tank

MilkCab's functions can be controlled by 4.3" color touch screen placed on front side of the tank and features an intuitive user interface. Stainless Steel cover ensures the protection of electrical and electronic components. Heat exchanger on the tank's side wall and bottom for faster milk heating and time savings. Agitation during heating, pasteurization, and cooling ensures uniformed temperature throughout the milk and prevents burned content during pasteurization. 304 Stainless Steel milk tank with polyurethane foam insulation. Wheel brake to prevent rolling.

MilkCab for Raw Milk

DESCRIPTION	PART#
MilkCab 26 Gal Simple Unit (Powder Only)	80127
MilkCab Water and Power Supply Panel	80128
MilkCab Colostrum Pasteurization	80129
MilkCab 26 Gal Milk and Powder 3 Wheel with Electric Drive	80130
MilkCab 26 Gal Milk and Powder 3 Wheel w/o Electric Drive	80131
MilkCab 52 Gal Milk and Powder 3 Wheel with Electric Drive	80132
MilkCab 52 Gal Milk and Powder 3 Wheel w/o Electric Drive	80133
MilkCab 52 Gal Milk and Powder 4 Wheel with Electric Drive	80134
MilkCab 52 Gal Milk and Powder 4 Wheel w/o Electric Drive	80135
MilkCab 79 Gal Milk and Powder 4 Wheel with Electric Drive	80136
MilkCab 79 Gal Milk and Powder 4 Wheel w/o Electric Drive	80137



Safgard™ Stainless Steel Swing-Arm

Part# 47440

The Safgard SS swing-arm is designed for herringbone, parabone, parallel milking parlors. Due to its unique design, one size fits all installations. Proper milking claw alignment insures complete milk-out resulting in better udder health. Factory fabricated assemblies install with little on-farm labor. Open pit working area increases throughput and operator comfort.

Features:

- Complete stainless steel construction
- Can be used with most automatic detachers
- Fully adjustable cylinder angle
- Stainless steel retract cylinder
- Custom units available on request

