

Tuthill Rotary Lobe Pumps



Quick recovery feature means these pumps are great for variable speed installations. A dependable lower cost alternative to the Lobe-Aire systems, Tuthill vacuum pumps are American made.

MODEL	DESCRIPTION	PART#
4005	7.5-10 HP Oil bath both sides	48586
5006	10-15 HP Oil bath both sides	48587
6008	20-25 HP Oil bath both sides	48588
4007	7.5-15 HP Oil bath both sides	48597

MODEL	PART#	HP	RPM	CFM	WT.	NPT	SHAFT
4005	48586	7.5	1820	75	113#	2.5"	7/8"
4005	48586	10	2413	100	113#	2.5"	7/8"
4007	48597	7.5	1750	75	146#	3"	7/8"
4007	48597	10	1900	95	146#	3"	7/8"
4007	48597	15	2050	110	146#	3"	7/8"
5006	48587	10	1500	100	185#	4"	1 1/8"
5006	48587	15	2190	150	185#	4"	1 1/8"
6008	48588	20	1540	200	310#	5"	1 3/8"
6008	48588	25	2000	250	310#	5"	1 3/8"



Tuthill Vertical Table Mount Pump Systems Complete

Systems Include: Pump, motor, vertical table and guard, pulley kit, and muffler.

MODEL	DESCRIPTION	PART#
4005	7.5hp vertical assembly	48591
4005	10hp vertical assembly	48592
4007	7.5hp vertical assembly	48590
4007	10hp vertical assembly	48590-2
4007	15hp vertical assembly	48590-4
5006	10hp vertical assembly	48593
5006	15hp vertical assembly	48594
6008	20hp vertical assembly	48595
6008	25hp vertical assembly	48596

TUTHILL ROTARY-LOBE VACUUM PUMP PULLEY KITS

PUMP	HP	RPM	MOTOR PULLEY		MOTOR BUSHING		PUMP PULLEY		PUMP BUSHING	
			SIZE	PART#	SIZE	PART#	SIZE	PART#	SIZE	PART#
4005	7.5	1750	2B46SDS	48623	SDS 1 3/8"	48470-1	2B46SDS	48623	SDS 7/8"	48468
4005	10	1900	2B00SDS	48623-1	SDS 1 3/8"	48470-1	2B46SDS	48623	SDS 7/8"	48468
4007	7.5	1750	2B46SDS	48623	SDS 1 3/8"	48470-1	2B46SDS	48623	SDS 7/8"	48468
4007	10	1900	2B50SDS	48623-1	SDS 1 3/8"	48470-1	2B46SDS	48623	SDS 7/8"	48468
4007	15	2050	2B54SDS	48462	SDS 1 5/8"	48471	2B46SDS	48623	SDS 1 1/8"	48469
5006	10	1900	2B50SDS	48623-1	SDS 1 3/8"	48470-1	2B46SDS	48623	SDS 1 1/8"	48469
5006	15	2050	2B54SDS	48462	SD 1 5/8"	48471	2B46SDS	48623	SDS 1 1/8"	48469
6008	20	1540	3B60SD	48425	SD 1 5/8"	48471	3B68SD	48427	SDS 1 1/8"	48469
6008	25	2050	4B80SK	48433	SK 1 7/8"	48449	4B70SK	48431	SDS 1 1/8"	48469

Sutorbilt Lobe Vacuum Pumps

"Oil Splash Lubrication" on both ends. DSL Series is new style and interchangeable with old style Sutorbilt pumps.



Sutorbilt Legend DSL R-Series Blowers

DESCRIPTION	RPM	PORTS	SHAFT	HP	CFM	PART#
3M	2550	2"	3/4"	5	60	48390
4M	1920	2.5"	7/8"	7.5	82	48391
4H	2175/2900	1.5"	7/8"	5/7.5	55/84	48392
5M	1875/2400	4"	1 1/8"	15/25	156/200	48393
5H	1520/1975	2.5"	1 1/8"	7.5/10	82/108	48394
6M	1825/2130	5"	1 3/8"	25/30	265/315	48395

Vacuum Systems & Components

SCH Lobe-Aire Vertical Vacuum Pumps

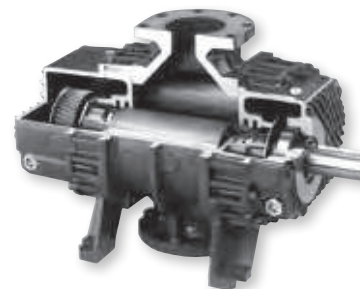
Matched impellers rotating in opposite directions, trap a volume of air at the inlet and move it around the perimeter to the outlet.

This cycle is repeated four times during each revolution of the input shaft. The capacity of the blower is proportional to the speed of rotation, while pressure is generated by system resistance.

Rotation of the impellers is synchronized by helical timing gears which are keyed to the shafts, eliminating contact between impellers.

The blower is engineered for the smoothest possible flow of air. The rotating impellers trap incoming air and move it through the cylinder.

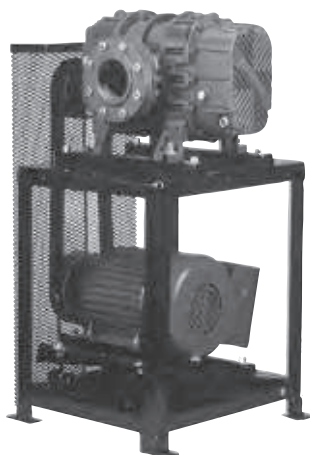
- 100,000 hour bearing life
- Non-wearing oil and shaft seals
- Oil sumps on both ends w/sight glasses



SCH Lobe-Aire Vertical Vacuum Pumps

DESCRIPTION	EXHAUST	PART#	SHIPPING WT. (LBS)
SCH 35 Pump (7.5-10 HP)	3"	48487	215
SCH 55 Pump (10-15 HP)	4"	48489	370
SCH 65 Pump (15-20 HP)	4"	48490	415
SCH 75 Pump (20-30 HP)	5"	48491	510
SCH 85 Pump (30-40 HP)	6"	48492	580

PERFORMANCE			12" HG ASME		14" HG ASME	
MODEL	HP	RPM	CFM / BHP	BHP	CFM / BHP	BHP
SCH 35	7.5	2850	71	4.7	68	6.8
SCH 35	10	3800	104	7.8	100	9.0
SCH 55	10	2200	119	9.0	115	10.4
SCH 55	15	3200	192	13.0	187	15.0
SCH 65	15	2200	165	12.2	155	14.0
SCH 65	20	3200	257	17.7	247	20.0
SCH 75	15	1450	137	15.5	135	14.0
SCH 75	20	2000	217	18.5	207	19.0
SCH 75	25	2500	287	21.4	280	24.0
SCH 75	30	2800	327	23.0	320	26.5
SCH 85	30	2000	322	24.0	300	27.5
SCH 85	40	2500	430	30.0	410	34.0
SCH 85	40	2800	490	33.2	470	38.5

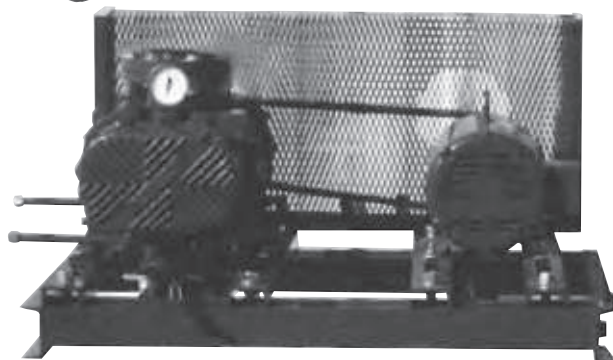


SCH Lobe-Aire Vertical Table Mount Pump Systems Complete

Systems Include:

Pump, motor, large vertical table and guard, pulley kit, muffler and flanges

PART#	DESCRIPTION
48550	SCH35-7.5 HP vert. system
48551	SCH35-10 HP vert. system
48552	SCH55-10 HP vert. system
48553	SCH55-15 HP vert. system



SCH Lobe-Aire Horizontal Base For Vertical Pump Mount Systems Complete With Legs

Systems Include: Pump, motor, large HD base plate and guard, pulley kit, muffler and flanges.

PART#	DESCRIPTION
48535	SCH35-7.5 HP horizontal system
48536	SCH35-10 HP horizontal system
48537	SCH55-10 HP horizontal system
48538	SCH55-15 HP horizontal system
48539	SCH65-15 HP horizontal system
48540	SCH65-20 HP horizontal system
48541	SCH75-15 HP horizontal system
48542	SCH75-20 HP horizontal system
48543	SCH75-25 HP horizontal system
48544	SCH75-30 HP horizontal system
48545	SCH85-30 HP horizontal system
48546	SCH85-40 HP horizontal system

SCH LOBE-AIRE PULLEY KITS

PUMP	HP	RPM	MOTOR PULLEY		MOTOR BUSHING		PUMP PULLEY		PUMP BUSHING	
			SIZE	PART#	SIZE	PART#	SIZE	PART#	SIZE	PART#
SCH 35	7.5	2850	3B110SK	48429	SK 1 $\frac{3}{8}$ "	48447	3B68SD	48427	SD 38mm	48450-1
SCH 35	10	3800	3B136SK	48430	SK 1 $\frac{3}{8}$ "	48447	3B68SD	48427	SD 38mm	48450-1
SCH 55	10	2200	3B80SK	48428	SK 1 $\frac{3}{8}$ "	48447	3B64SD	48426	SD 48mm	48451-1
SCH 55	15	3200	3B110SK	48429	SK 1 $\frac{5}{8}$ "	48448	3B60SD	48425	SD 48mm	48451-1
SCH 65	15	2200	3B80SK	48428	SK 1 $\frac{5}{8}$ "	48448	3B64SD	48426	SD 48mm	48451-1
SCH 65	20	3200	3B110SK	48429	SK 1 $\frac{5}{8}$ "	48448	3B60SD	48425	SD 48mm	48451-1
SCH 75	15	1450	4B70SK	48431	SK 1 $\frac{5}{8}$ "	48448	4B86SK	48434	SK 55mm	48452-1
SCH 75	20	2000	4B86SK	48434	SK 1 $\frac{5}{8}$ "	48448	4B74SK	48432	SK 55mm	48452-1
SCH 75	25	2500	4B110SK	48435	SK 1 $\frac{7}{8}$ "	48449	4B80SK	48433	SK 55mm	48452-1
SCH 75	30	2800	4B110SK	48435	SK 1 $\frac{7}{8}$ "	48449	4B70SK	48431	SK 55mm	48452-1
SCH 85	30	2000	4B86SK	48434	SK 1 $\frac{7}{8}$ "	48449	4B74SK	48432	SK 55mm	48452-1
SCH 85	40	2800	4B110SK	48435	SK 2 $\frac{1}{8}$ "	48453	4B70SK	48431	SK 55mm	48452-1

Maxi-Vacuum Variable Speed Vacuum Pump Drive Units

Maxi-Vacuum Variable Speed Vacuum Pump Drive Units

Maxi-Vacuum variable speed drives are shipped pre-programmed. No messing around with confusing manuals. Just set the desired vacuum level with the user friendly keypad and you are done. The Maxi-Vacuum VSD will maintain a stable vacuum due to fast response transducer technology.

Now you can monitor the vacuum level, motor load amperage, and vacuum fluctuation on your personal computer in the home or office. This valuable information is available in real time, at your finger tips. Standard equipment on the Maxi-Vacuum system.

The Maxi-Vacuum VSD acts as the motor starter, motor overload protector, and phase inverter.

The unit can be used with both single phase and three phase power. See wiring diagram on page 130.

Transducer Assembly Part# 48576

Rugged mil. spec. transducers are built for the harsh environment of todays modern dairies. Stable at any temperature or humidity.

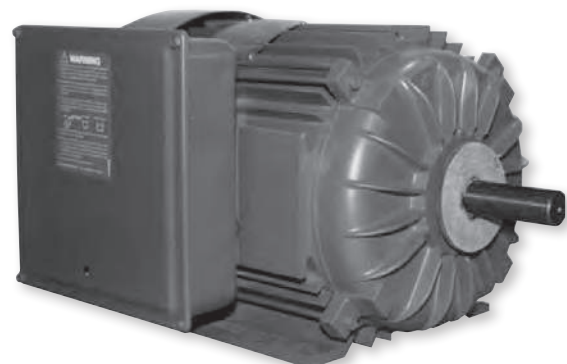
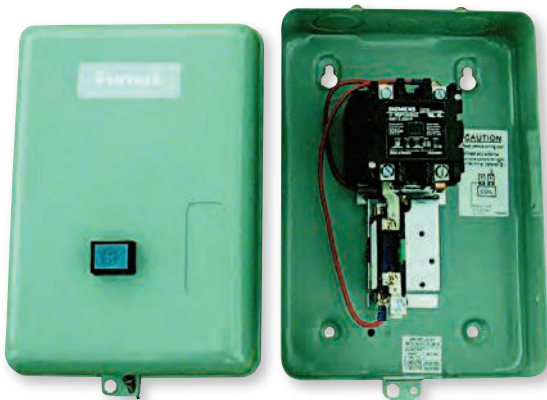


Maxi-Vacuum Variable Speed Vacuum Pump Drive Units

DESCRIPTION	PART#
5 hp 240 volt Maxi-Vac Drive	48575
7.5 hp 240 volt Maxi-Vac Drive	48575-1
10 hp 240 volt Maxi-Vac Drive	48575-2
15hp-240 volt Maxi-Vac Drive	48575-3
20hp 240 volt Maxi-Vac Drive	48575-4
25hp 240 volt Maxi-Vac Drive	48575-5
30hp 240 volt Maxi-Vac Drive	48575-6
40hp 240 volt Maxi-Vac Drive	48575-7
<hr/>	
5hp 480-volt Maxi-Vac Drive	48577
7.5hp 480-volt Maxi-Vac Drive	48577-1
10hp 480 volt Maxi-Vac Drive	48577-2
15hp-480 volt Maxi-Vac Drive	48577-3
20hp 480 volt Maxi-Vac Drive	48577-4
25hp 480 volt Maxi-Vac Drive	48577-5
30hp 480 volt Maxi-Vac Drive	48577-6
40hp 480 volt Maxi-Vac Drive	48577-7

Line Conditioners for Vacuum Pump Speed Drives

DESCRIPTION	PART#
10hp 240-volt line conditioner	48580-2
10hp 480-volt line conditioner	48580-3



Furnas™ - Steel Boxed Contactors

Can be wall mounted or coupled directly to the work-load. Perfect for Automatic Pipeline washer installations. Available with either 110 volt or 220 volt control coils. 40 Amp and 50 Amp contact ratings.

DESCRIPTION	PART#
50 AMP 2 Pole 120V coil contactor for vacuum pumps up to 10 HP	43632
40 AMP 2 Pole 120V coil contactor for vacuum pumps up to 5 HP	43630
120V Coil Only	43630-1
Box only	43630-2
40 AMP 2 Pole 240V coil contactor for vacuum pumps up to 5 HP	43631
240V Coil Only	43631-1

Vacuum Pump Duty Motors

SINGLE PHASE	PART#
2 HP Motor, 220V, 1 Phase - 182T	48337
3 HP Motor, 220V, 1 Phase - 184T	48338
5 HP Motor, 220V, 1 Phase - 184T	48339
7.5 HP Motor, 220V, 1 Phase - 215T	48340
10 HP Motor, 220V, 1 Phase - 215T	48341
<hr/>	
THREE PHASE	PART#
7.5 HP Motor, 220V, 3 Phase - 213T	48342
10 HP Motor, 220V, 3 Phase - 215T	48343
15 HP Motor, 220V, 3 Phase - 254T	48344
20 HP Motor, 220V, 3 Phase - 256T	48345
25 HP Motor, 220V, 3 Phase - 284T	48346
30 HP Motor, 220V, 3 Phase - 286TC	48346-1
40 HP Motor, 220V, 3 Phase - 324TC	48346-2
1.15 Service Factor	

Skellerup Masport Rotary Vane Vacuum Pumps



Skellerup Masport Rotary Vane Vacuum Pumps

Skellerup Masport pump heads are proven to be reliable with over 60 years of experience in the dairy industry. Every pump is bench tested and is shipped with guaranteed performance.

Skellerup Masport pumps feature the Safgard drip oiling system.

MODEL	SPEED	AIR FLOW
M2	1195	20CFM
M3	1195	32CFM
M4	1100	50CFM
M 5	1100	55CFM
M 7.5	1100	83CFM

Masport Vertical Pump Systems

Complete vertical system includes: Vacuum pump, oiler, motor, vertical table, and pulley system.

DESCRIPTION	PUMP W/O OILER PART#	PUMP W/ OILER PART#	PULLEY KIT PART#	VERT. SYSTEM COMPLETE PART#	VERT. SYSTEM LESS MOTOR PART#
2HP Skellerup pump	48285	48300	48347	48304	48304-1
3HP Skellerup pump	48286	48301	48348	48305	48305-1
4HP Skellerup pump	48289	48298		48308	48308-1
5HP Skellerup pump	48287	48302	48349	48306	48306-1
7.5HP Skellerup pump	48288	48303	48350	48307	48307-1

PUMP	H.P.	RPM	MOTOR PULLEY SIZE	MOTOR PULLEY PART#	MOTOR BUSHING SIZE	MOTOR BUSHING PART#	PUMP PULLEY SIZE	PUMP PULLEY PART#	PUMP BUSHING SIZE	PUMP BUSHING PART#	BEARINGS PART#	OIL SEAL PART#
M2	2	1195	4.1	48456	SH 1 1/8	48465	6.0	48458	SH 25mm	48467	48315	48315-1
M3	3	1195	4.1	48456	SH 1 1/8	48465	6.0	48458	SH 25mm	48467	48315	48315-1
M5	5	1100	5.4TB	48462	SDS 1 1/8	48469	8.6TB	48463	SK 30mm	48473	48316	48316-1
M7.5	7.5	1100	5.4TB	48462	SD 1 3/8	48470	8.6TB	48463	SK 30mm	48473	48316	48316-1

Masport Vacuum Pump Parts (See Drawing Lower Right)

ITEM	PART#	DESCRIPTION
1	48317-0	End cover bolt
2	48317-1	Coverplate drive end M2 / M3
2	48317-2	Coverplate drive end M5 / M7.5
NP	48317-E	End cover gasket .002 Pink
NP	48317-F	End cover gasket .003 Yellow
3	48315-1	Shaft seal M2 / M3
3	48316-1	Shaft seal M5 / M7.5
4	48315	Bearing M2 / M3
4	48316	Bearing M5 / M7.5
5	48317-3	Bearing shim washer M2 / M3
5	48317-4	Bearing spacer M5 / M7.5
13	48322-3	Rotor and shaft assy. M3
13	48322-4	Rotor and shaft assy. M5
13	48322-5	Rotor and shaft assy. M7.5
8	48322-6	Cylinder M 3
8	48322-7	Cylinder M 5
8	48322-8	Cylinder M 7.5
6	48318	Vane M 2
6	48319	Vane M 3
6	48320	Vane M 5
6	48321	Vane M 7.5
10	48317-5	Flange gasket M2 / M3
10	48317-6	Flange gasket M5 / M7.5
12	48317-8	2" Flange M5 / M7.5

Masport Oiler System

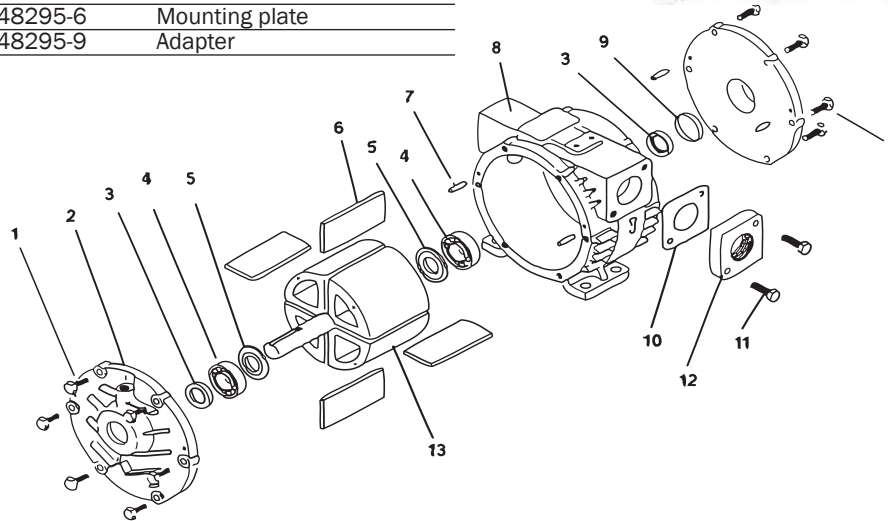
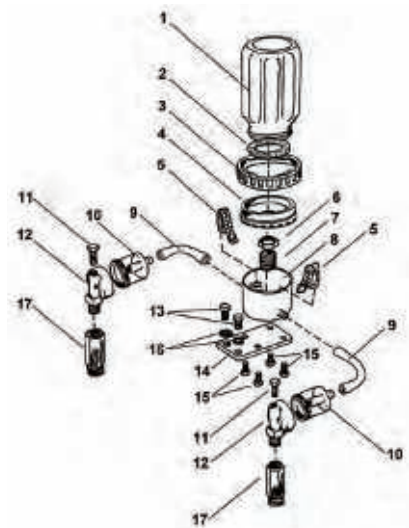
Not sold w/ Schlueters Masport pumps

PART#	DESCRIPTION
48294	2 and 3 HP oiler
48295	5 and 7.5 HP oiler

Masport Oiler System Parts

Not sold w/ Schlueter's Masport pumps

PART#	DESCRIPTION
48294-0	Oil container
48294-1	Gasket
48294-2	Locking ring
48294-3	Cap
48294-4	Wick for M2/3
48294-5	Lock nut
48294-6	Spout
48294-7	Bowl
48294-9	Site glass
48295-0	Wick for M5/7.5
48295-4	Flow meter base
48295-6	Mounting plate
48295-9	Adapter



Vacuum Systems & Components

Safgard™ Oil Reclaimer/Muffler

2" Inlet Reclaimer
Part# 48299



Old Style Oil Filter

Part# 48267

- Reduces oil consumption
- Reduces pump noise
- Adapts to virtually all vane vacuum pumps
- Includes oil filter and brass anti-reversing valve
- New cleanout hole

Safgard™ Rotary Vane/Lobe Oil

Safgard Rotary Vane and Rotary Lobe Vacuum Pump Oils are specifically formulated for use in dairy applications, insuring proper lubrication of vanes, gears, and bearings.

Rotary Vane Oil

DESCRIPTION	PART#
4 × 1 Gallon	48010
5 Gallon Pail	48005

Lobe Vacuum Pump Oil

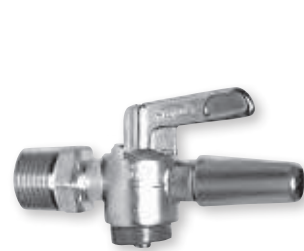
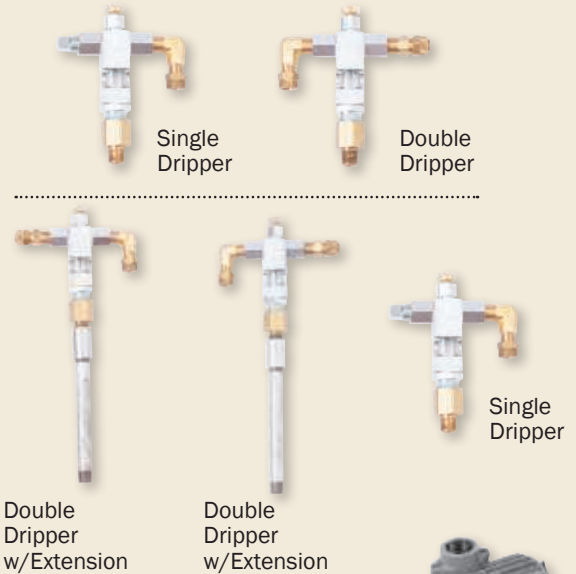
DESCRIPTION	PART#
14 oz. Lobe Grease	48015
1qt. Synthetic Oil	48016



Oiling System Rotary Vane Vacuum Pumps

Schlueters Oiling System can be used in place of all wick type or drip type oilers. Precision Needle Valve Drippers can be adjusted for all oil types in all climates for accurate metering of bearing and vane lubrication. Double or triple valve configs.

DESCRIPTION	PART#
Large oiler complete 1 gal. (1 single, 1 double dripper)	48198
Large oiler complete 1 gal. (1 single & 2 double drippers ext)	48198-A
Oiler bracket	48198-1
Single dripper	48206
Double dripper	48207
Hose for oilers (sold by foot)	48261
¼" × ⅛" brass male elbow	48207-1
¼" × ⅛" brass male straight	48207-2
Nut fitting and insert	48198-9
Plug only for dripper	48198-8
Multi Sight 2 feed	48207-4
Multi Sight 3 feed	48207-3



Straight Stall Cock

SIZE	PART#
½"	45490
¾"	45491



Angle Stall Cock

SIZE	PART#
½"	45492
¾"	45493

Drip Drain Valve

⅜" Pipe Thread
TYPE 16
Part# 45269-A



Surge® Alamo Replacement Filters

Fits all Alamo Steel Pre-Air filters.
Part# 48292



Utile Pump Replacement Parts

No longer being sold as a whole good. We maintain a stock of parts as described below



PART#	DESCRIPTION	PUMP TYPE
48084	2" Flange	MP80/130/185
48085	2½" Flange (Old style)	MP185
48086	Inlet flange	MP340/450
48087	Outlet flange	MP340/450
48089	Spacing ring drive end	MP340/450
48090	Spacing ring rear end	MP340/450
48091	Adaptor	MP80/130/185
48092	Coverplate gasket	MP80/130/185
48092-1	Coverplate bolt only	MP80/130/185
48093	2" Flange gasket	MP80/130/185
48094	2½" Flange gasket (Old style)	MP185
48095	Dowel pin	MP80/130/185
48096	Thrust washer B1070	MP80/130/185
48097	Thrust washer B1069	MP340/450
48098	Circlip	MP340/450
48100	Coverplate gasket	MP340/450
48100-1	Coverplate bolt only	MP340/450
48101	Flange gasket	MP340/450
48102	Dowel pin	MP340/450
48103	Non-return valve	MP340/450
48172	H1040 bearing	MP80/130/185
48173	H1028 bearing	MP340/450
48208	Shaft seal	MP80/130/185
48209	Shaft seal	MP340/450
48255	Coverplate drive end	MP340/450
48256	Coverplate rear end	MP340/450
48257	Coverplate drive end	MP80/130/185

Belts

PART#	DESCRIPTION
48436	BP-64 Conventional
48477	BP-67 Conventional
48438	BP-73 Conventional
48437	BP-71 Conventional
48477-1	BP-105 Conventional
48477-2	BP-108 Conventional
48476	3VX475 Wedge
48474	3VX600 Wedge
48475	3V630 Wedge
48631	BX49 Raw Edge Cogged
48632	BX52 Raw Edge Cogged
48633	BX61 Raw Edge Cogged

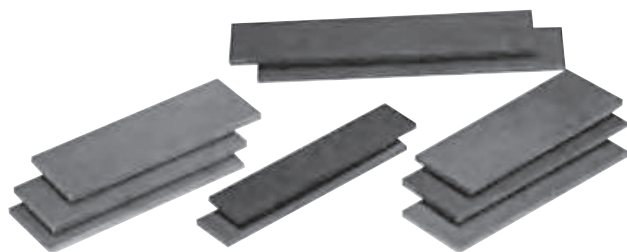


Pulleys

DESCRIPTION	PART#
2B56SD	48620
2B68SD	48621
2B86SD	48622
3B48SD	48459
3B56SD	48624
3B58SD	48460
3B60SD	48425
3B64SD	48625
3B68SD	48427
2B46SDS	48623
2B50SDS	48623-1
2B54SDS	48462
2B58SDS	48423
2B60SDS	48424
2B86SK	48463
3B80SK	48428
3B110SK	48429
3B136SK	48430
4B70SK	48431
4B74SK	48432
4B80SK	48433
4B86SK	48434
4B110SK	48435
2-3V335SH	48455
2-3V412SH	48456
2-3V530SH	48457
2-3V600SH	48458

Bushings

DESCRIPTION	PART#
SD 3/4"	48627
SD 7/8"	48628
SD 1 1/8"	48629
SD 1 3/8"	48470
SD 1 5/8"	48471
SD 32mm	48450
SD 38mm	48450-1
SD 42mm	48451
SD 48mm	48451-1
SDS 7/8"	48468
SDS 1 1/8"	48469
SDS 1 3/8"	48470-1
SK 1 1/8"	48446
SK 1 3/8"	48447
SK 1 5/8"	48448
SK 1 7/8"	48449
SK 2 1/8"	48453
SK 30mm	48473
SK 38mm	48472
SK 50mm	48452
SK 55mm	48452-1



Vane Replacement

For DeLaval™, Surge™, Universal™, Bou-Matic™, Chore-Boy™, Masport™, and Utile™ Pumps

DESCRIPTION	QTY. REQ.	PART#
DeLaval™ 76 Replacement	4	48195
DeLaval™ 777 Replacement	4	48195-1
DeLaval™ 78 Replacement	4	48196
Surge™ 75-100 Alamo™ Replacement	4	48197
Westfalia™ 2300 Replacement	4	48197-2
Westfalia™ 2800 Replacement	4	48197-1
3 HP Masport™ Replacement	4	48319
5 HP Masport™ Replacement	4	48320
7.5 HP Masport™ Replacement	4	48321
Utile MP80	4	48190
Utile MP130	4	48191
Utile MP185	4	48192
Utile MP200	4	48170-2
Utile MP300	4	48171-2
Utile MP340 (DeLaval™ 84 Replacement)	5	48193
Utile MP450 (DeLaval™ 86 Replacement)	5	48194
FR 3 / 3A Bou-Matic™ Replacement	4	48323
FR 4 / 4A Bou-Matic™ Replacement	4	48324

NOTE: Bevel faces rotation.

Replacement Vacuum Pump Vanes contain no asbestos. Replace vanes in sets for maximum performance.



Threaded Mufflers

DESCRIPTION	PUMP TYPE	PART#
1 1/2" Male-Threaded Muffler (24")	Vane	48309
2" Male-Threaded Muffler (27")	Vane	48310
2 1/2" Male-Threaded Muffler(33")	Lobe	48615
3" Male-Threaded Muffler(36")	Vane	48312
3" Muffler MPT (51")	Lobe	48494
3" Muffler FPT (37")	Lobe	48494-4
4" Muffler MPT (53")	Lobe	48495
4" Muffler FPT (48")	Lobe	48495-3

Flanged Mufflers & Silencers

DESCRIPTION	PUMP TYPE	PART#
SHORT SILENCER BLUE FLANGED		
4" Muffler with flange	Lobe	48495-4
5" Muffler with flange	Lobe	48496
6" Muffler with flange	Lobe	48497
LONG SILENCER BLUE FLANGED		
5" Flanged silencer (64")	Lobe	48496-3
6" Flanged silencer (72")	Lobe	48497-3



Special Muffler

Vacuum Systems & Components



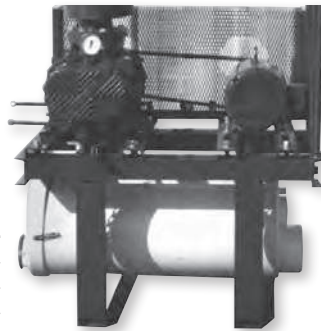
Base Plate for Pump & Motor

PUMP AND MOTOR SIZE	PART#
18" x 30" - 3 HP - 7.5 HP	48363



Belt Guard for Base Plate

PUMP AND MOTOR SIZE	PART#
18" x 30" - 3 HP - 7.5 HP	48366
24" x 40" - 7.5 HP - 20 HP	48360-1
30" x 60" - 10 HP - 30 HP	48362-1



Channel Style Base Plate for Pump & Motor

PUMP AND MOTOR SIZE	PART#
24" x 40" - 7.5 HP - 20 HP	48360
30" x 60" - 10 HP - 30 HP	48362
Leg Assembly	48362-2



Safgard™ Cool Milk Stainless Steel 4" Shell-And-Tube Heat Exchanger For Hot Wash Water Part# 48570

4" clamp shell 45.0" long. Total length 52.0" with ends 1.5" clamp. 15 - 5/8" ID tubes have about 10 SQ FT of heat exchanging area. All 304 Stainless polished OD on the shell and ID in the tubes exchange heat or cold for liquid to liquid or air to liquid or air to air. The product being heated needs to flow in reverse directions.

Uses & Benefits:

Vacuum pump exhaust heat reclaiming to make hot wash water
Boosting wash water temperature in a CIP system replaces heat exchangers with defective gaskets
Can be used to replace heat exchangers of all kinds

Vertical Table Mount

Includes guards and runners. Fits most vacuum pumps and motors with little adjustment.
For 3, 5, 7.5 HP

Part# 48364

For 7.5, 10, 15, 20 HP

Part# 48365

Guard Only for Small Table

Part# 48364-1

Guard Only for Large Table

Part# 48365-1



Heavy Duty Vertical Mount Stand

With multiple holes drilled for many style pumps

Part# 48385



Heavy Duty Horizontal Mount Stand

With multiple holes drilled for many style pumps

Part# 48384

Digital Vacuum Gauge-HG
Part# 45500 (Pictured Right)

Part# 45500-1 Replacement base mount nipple for DVG

Digital Vacuum Gauge-KPA
Part# 45501

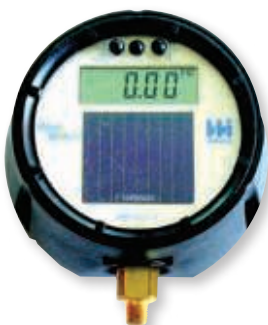
Also Available in Portable Vacuum Gauge

Portable Vacuum Gauge Part # : 45505

- Accurate way to field measure vacuum
- Rechargeable lithium ion battery
- 110 Volt and 12 Volt chargers included
- Stainless Steel hanger fits up to 3" pipe

- Storage box for gauge and chargers
- Bright red LED display for excellent visibility

- Large easy read LED display.
- Factory calibrated for your convenience.
- Fits directly to vacuum line.
- Requires 12-24 Volts AC/DC.
- Fully temperature compensated.
- Not affected by elevation.
- Easy two wire electrical connection with 6' flying lead.
- Connects to any existing low voltage power source such as detacher or pulsation.



Solar Powered Digital Vacuum Gauge
Part# 45498

Large 4½" display encased in a weatherproof thermoplastic enclosure. Accuracy is within .5% across the range. ¼" male NPT mount. Displays 0-30" HG. Adjustable alarm points.



Vacuum Gauge
Part# 45499

This gauge gives both english and metric readings. For use in vertical mounting position only. Equipped with a recalibration screw for adjustment. ¼" NPT, 5" dial. 0-30" HG range outer scale, 0-100 KPA inner scale. Meets ISO 228-1 Standard.



2½" Liquid Filled Vacuum Gauge

- Stainless Steel Body
 - Vibration Free Operation
- Part# 45499-1**

Inline PVC Check Valve

- Long lasting
- Heavy duty PVC flapper
- Horizontal installation

SIZE	PART#
3" Complete	48278
4" Complete	48279
6" Complete	48280
3" Flapper/Gasket	48278-1
4" Flapper/Gasket	48279-1
6" Flapper/Gasket	48280-1



Vacuum Pump Exhaust Flappers 1½" - 6"

- Long lasting
- No rust exhaust caps - aluminum casting
- Stainless steel pivot and nuts

SIZE	PART#
1½"	48276-1
2"	48276-2
2½"	48276-3
3"	48276-4
4"	48276-5
5"	48276-6
6"	48276-7



Vacuum Gate Valves

Sturdy PVC gate valves are constructed of all non-corrosive materials. Ideal for vacuum shut-off points and inspection points in any part of the vacuum system. Cannot be used in milk contact area of a milking system. Each valve has a female PVC fitting on each side for ease of installation.

DESCRIPTION	PART#
1½"	48175
2"	48176
3"	48177
4"	48174
6"	48174-1
8"	48174-2
Aluminum Handle	48179-2
Plastic Handle	48179-3
Seal for 1 1/2"	48178
Seal for 2"	48178-1
Seal for 3"	48179
Seal for 4"	48179-1
Seal for 6"	48179-4



1½" - 2" Anti-Reversing Valve
Part# 48314

To be mounted on end of exhaust pipe. Eliminates reversing of vacuum pumps at shutdown.

Rubber Only
Part# 48313



Brass Check Valves

DESCRIPTION	PART#
2" Brass check valve (only)	48260
3" Brass check valve (only)	48275



Vacuum Systems & Components

Vacuum Pre-Air Filters

3" Female Slip PVC - Two Inlets and One Outlet For Two Pump System

Part# 48354

4" Female Slip PVC - Two Inlets and One Outlet For Two Pump System

Part# 48355-1

One 4" Inlet and One 4" Outlet

Part# 48354-1

One 6" Inlet and One 6" Outlet

Part# 48354-2

DESCRIPTION	PART#
Gasket for cover	48375
Cover (less gasket)	48375-1
Screen only (11 ³ / ₄ " x 18" x ³ / ₈ ")	48376
Baffle	48376-1
Standard SS screen	48376-2
SS perforation	48376-4
Screen 11 1/2" x 18 1/2"	48376-6



Added protection for vacuum pumps. Designed to filter out moisture and debris prior to entry into vacuum pumps. Washable filter & self draining are standard. Airflow intake through baffle unit, then screen.



PVC Domed Balance Tanks

Vertical Balance Tank

Part# 48358

Consists of 15" x 48" tank w/3 - 3" slip inlets(extended to prevent crossover) & 1 - 3" side inlet, and one 1¹/₂" drain with base. Approx. 40 gallon capacity



Compact Vertical Tank

Part# 48371

Consists of 15" x 36" tank 30 gallon capacity/Inlet config. same as above.

Vertical Balance Tank

Part# 48380

Consists of 15" x 48" tank w/3 - 4" slip inlets (extended to prevent crossover) & 2 - 4" side inlet, and one 1¹/₂" drain with base. Approx. 40 gallon capacity

Compact Horizontal Tank

Part# 48372

Consists of 15" x 36" tank 30 gallon capacity



Horizontal Balance Tank

Six 3" Inlets - Part# 48356

Six 4" Inlets - Part# 48381

Consists of 15" x 60" tank with six inlets as specified, and one 1¹/₄" drain Mounting Kit (for wall or ceiling) Approx. 50 gallon capacity

Replacement Parts

DESCRIPTION	PART#
End only 15" with 3" hole	48351
End only 15" without holes	48351-1
Top only for vertical tank with 3 - 3" inlets	48352
End only for 12" horizontal with 3" hole	48373
Bottom only for vertical PVC tank with 1 ¹ / ₂ " drain	48374



Horizontal Balance Tank

Part# 48357

Consists of 12" x 79" Tank with four 3" slip inlets and two 4" slip inlets, 1¹/₂" drain. Mounting kit for wall or ceiling. Approx. 45 gallon capacity

100 Gallon Horizontal Tanks

	PART#
15" x 10' - 8-3" inlets on top - 1 ¹ / ₂ " drain	48378
15" x 10' - 8-4" inlets on top - 1 ¹ / ₂ " drain	48378-1

1" Tank Drain

Part# 48370

1¹/₄" Tank Drain

Part# 48377

Rubber Flapper for

1¹/₄" Tank Drain

Part# 48377-1

1¹/₂" Tank Drain

Part# 48369



Vertical Base
Part# 48358-1



Wall Bracket
for Horizontal PVC Tank
Part# 48359

Sentinel™ Vacuum Controllers

The most stable vacuum available for milking. Response measured in milliseconds to maintain vacuum within + 0.2 inches.



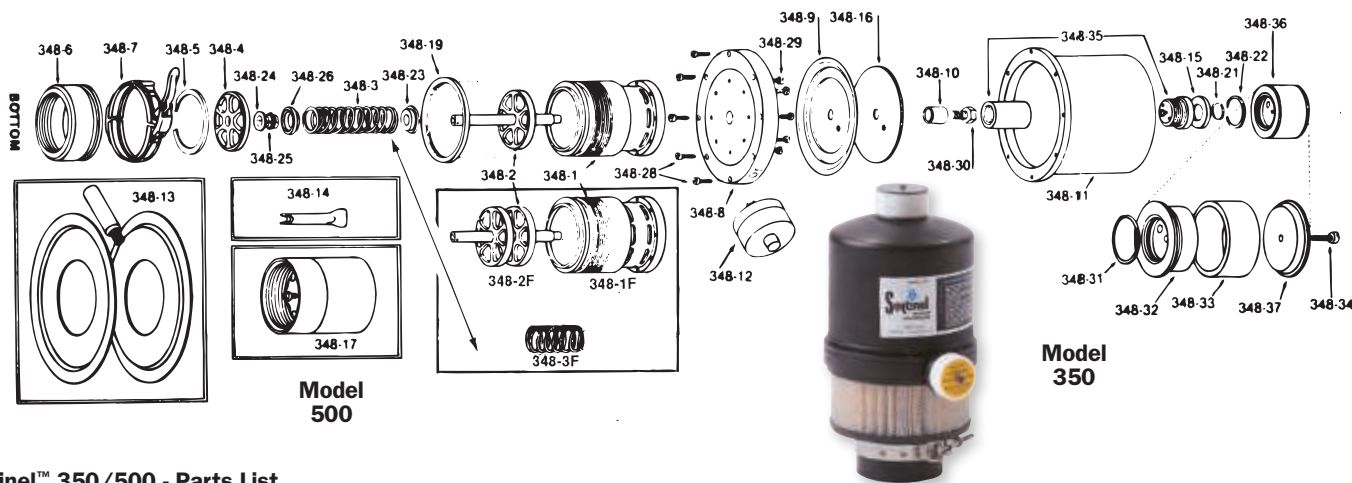
	Sentinel 500	Sentinel 350	Sentinel 100	Sentinel Mark II
PART#	47249	47250	47251	47227
CFM-ASME	500	350	100	150
CFM-N.Z.	1000	700	200	300

Most Common Replacement Parts Sentinel™ Mark II Controller

ITEM	DESCRIPTION	PART#
406-14	Rolling seal	47222
406-17	Diaphragm assy.	47225
406-21	Air filter	47229
406-22	Top dome filter	47232
WPRK01	Parts kit	47239

Parts - Sentinel™ 100, 350, 500 Controller

ITEM	DESCRIPTION	PART#
348-9	Diaphragm assy. - 350	47261
348-14	Wrench for 350, 500	47266
348-15	Top felt filter - 350, 500	47267
348-33	Top filter repl. cart. 100, 350, 500	47284
348-35	Aneroid assy. - 350	47286
	Bottom air filter - 350, 500	47289
353-6	Diaphragm assy. - 100	47295
	Bottom air filter - 100	47303



Sentinel™ 350/500 - Parts List

PART#	MFR #	DESCRIPTION
47253	348-1*	Body-350
472531	348-1F	Body-500
47254	348-2*	Poppet assy-350
472541	348-2F	Poppet assy-500
47255	348-3	Spring-350
472551	348-3F	Spring-500
47256	348-4	Poppet guide
47257	348-5	Lg lower snap ring
47258	348-6*	Inlet adapter
47259	348-7*	Disconnect clamp
47260	348-8*	Flange
47261	348-9	Diaphragm assy
47262	348-10	Diaphragm retainer

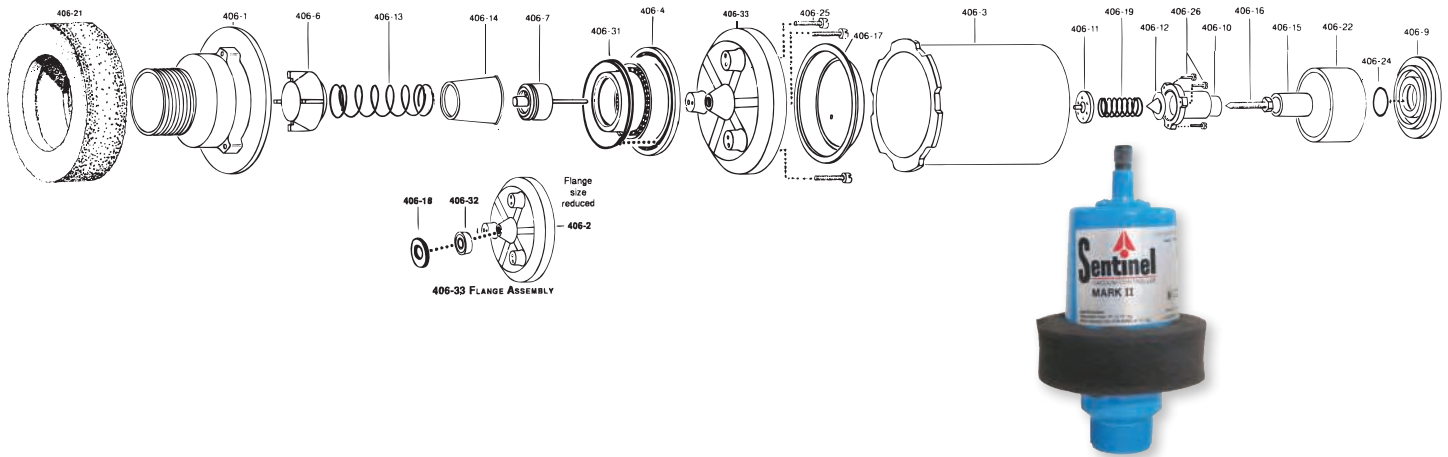
PART#	MFR #	DESCRIPTION
47263	348-11	Dome
47264	348-12	Air filter gauge
47265	348-13	Large filter adapter kit
47266	348-14	S.S. Adjusting wrench
47267	348-15	Top felt filter
47268	348-16	S.S. Back-up plate
47269	348-17	Safety valve
47271	348-19*	Filter retaining ring
47273	348-21	Small top snap ring
47274	348-22	Large top snap ring
47275	348-23	Spring guide
47276	348-24	Damping collar cmplt.
47277	348-25	Damping collar spring

PART#	MFR #	DESCRIPTION
47278	348-26	Damping collar retainer
47279	348-28	Flange screws 8-32 x 5/8
47280	348-29	Flange screws 10-32 x 5/8
47281	348-30	Diaphragm bolt
47282	348-31	Top dome filter "O" ring
47283	348-32	Filter cart. holder (bottom)
47284	348-33	Filter repl. cartridge
47285	348-34	Top cart. filter hold screw 10-32 x 1
47286	348-35	Aneroid assy complete
47287	348-36	Top dome filter (complete)
47288	348-37	Filter cartridge holder (top)
47289		Bottom air filter

* Specify model and serial number of regulator when ordering these part numbers.

Vacuum Systems & Components

Sentinel™ Mark II Parts

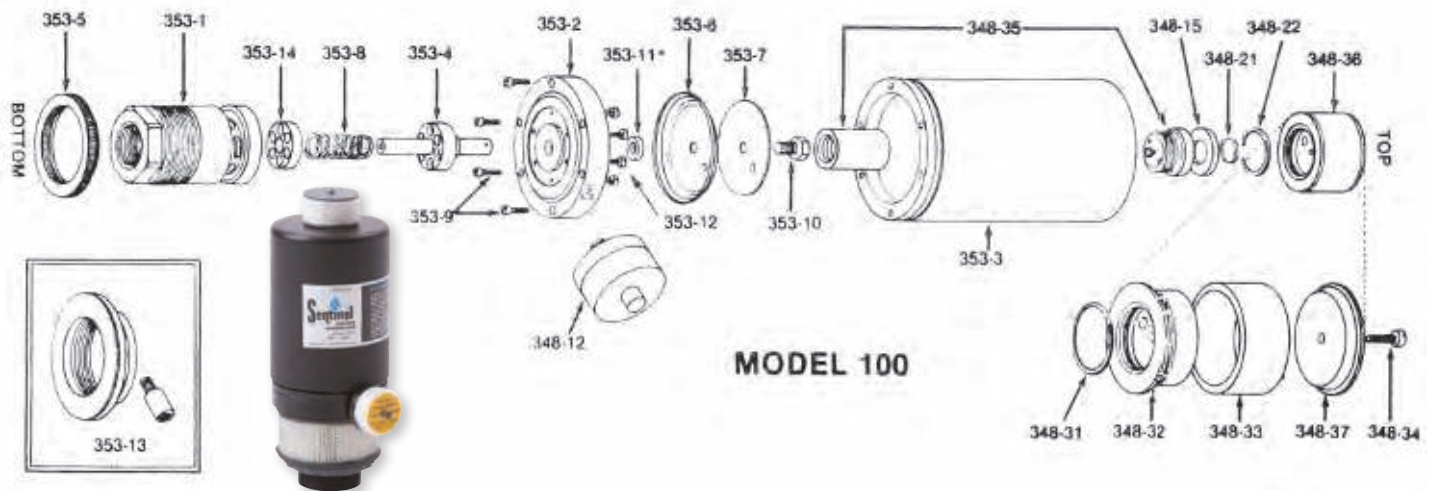


PART#	MFR #	DESCRIPTION
47211	406-1	Outlet body
47212	406-33L	Flange
47212-1	406-334	Flange & flow ring
47213	406-3	Dome
47214	406-4	Flow ring
47215	406-6	Plug
47216	406-7	Poppet/Push-pin assy
47217	406-9	Filter Cap
47218	406-10	Adjuster housing

PART#	MFR #	DESCRIPTION
47219	406-11	Dome Reg diaphragm assy
47220	406-12	Wobble plate
47221	406-13	Closing spring
47222	406-14	Rolling seal
47223	406-15	Adjusting knob
47224	406-16	Adjusting screw
47225	406-17	Diaphragm assembly
47227-1	406-18	Retaining washer

PART#	MFR #	DESCRIPTION
47228	406-19	Adjustment spring
47229	406-21	Air filter
47232	406-22	Top dome filter
47234	406-24	Buna-N 60 Shore "O" ring
47235	406-25	10-32 x 7/8 SS screw
47236	406-26	4-40 x 3/8 SS screw
47237	406-31	Outlet seal
47238	406-32	Ball seal

Sentinel™ 100 Parts



PART#	MFR #	DESCRIPTION
47290	353-1	Body-100
47291	353-2	Flange
47292	353-3	Dome
47293	353-4	Poppet assy.
47306-4	353-5	Filter retainer ring
47295	353-6	Diaphragm
47296	353-7	SS diaph. plate
47297	353-8	Spring

PART#	MFR #	DESCRIPTION
47298	353-9	Dome screws
47299	353-10	Diaphragm bolts
47300	353-11	Washer
47301	353-12	Flange screw
47302	353-13	Lg. filter adapter kit
47304	353-14	Poppet guide
47264	348-12	Air filter gauge
47267	348-15	Top felt filter
47273	348-21	Sm. top snap ring

PART#	MFR #	DESCRIPTION
47274	348-22	Lg. top snap ring
47282	348-31	Top dome filter "O" ring
47283	348-32	Filter cart. holder bottom
47284	348-33	Filter replacement cart.
47285	348-34	Top cart. filter hold screw
47286	348-35	Aneroid assy. (complete)
47287	348-36	Top dome filter (complete)
47288	348-37	Filter cart. holder top
47303		Bottom filter

Vacuum Systems & Components

Sentinel™ Peacekeeper Noise Suppressor & Air Filter

The Peacekeeper suppresses the noise created by air flow into the controller and provides a larger washable filter for all Sentinel units, including those that presently use only paper filtration.

Testing has shown that the Peacekeeper can cut up to 15 decibels off the existing noise level created by controllers. Now, every Sentinel™ vacuum controller can be positioned in the optimum location for best performance by using the Peacekeeper.

Mark II Peacekeeper Part# 47305 Complete

Model 350 Peacekeeper Part# 47307 Complete

Model 100 Peacekeeper Part# 47306 Complete

Model 100 Peacekeeper Parts

PART#	MFR #	DESCRIPTION
47306-1	462-1	Body 100
47306-2	462-2	Lid assembly
47306-3	462-5	Isolator
47306-4	462-6	Adapter ring
47306-5	406-15	Dome seal
47307-3	462-3	Filter ring (all models)
47307-4	462-4	Filter (all models)
47307-6	462-8	Screw (all models)
47307-7	462-14	Lid gasket (all models)

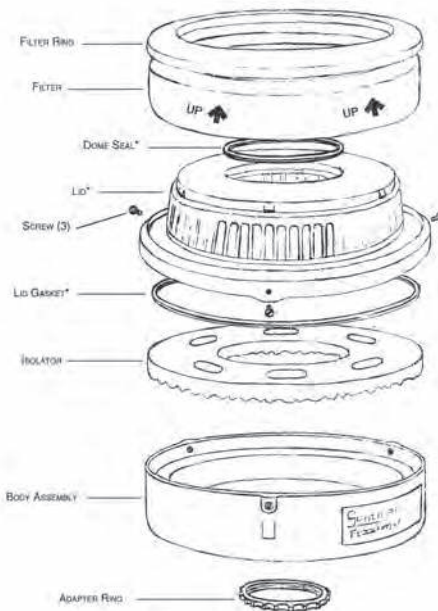
Model 350 Peacekeeper Parts

PART#	MFR #	DESCRIPTION
47307-1	462-1	Body 350
47307-2	462-2	Lid assembly
47307-3	462-3	Filter ring (all models)
47307-4	462-4	Filter (all models)
47307-5	462-5	Isolator
47307-6	462-8	Screw (all models)
47307-7	462-14	Lid gasket (all models)
47307-8	462-15	Dome seal

Mark II Peacekeeper Parts

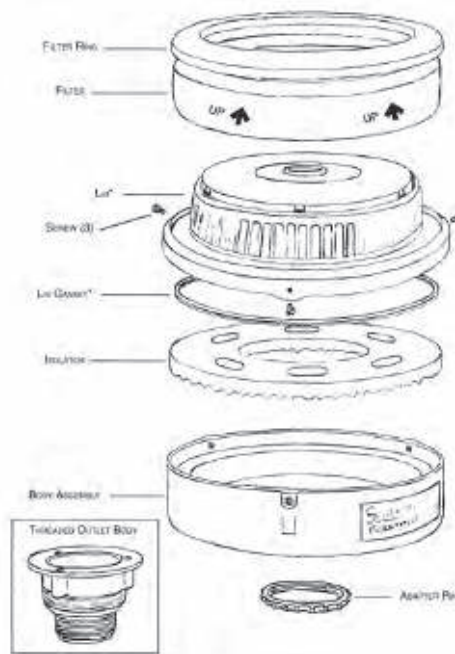
PART#	MFR #	DESCRIPTION
47305-1	462-1	Body Mark II
47305-2	462-2	Lid assembly
47305-3	462-5	Isolator
47305-4	462-6	Adapter ring
47305-5	406-100	Threaded outlet body
47307-3	462-3	Filter ring (all models)
47307-4	462-4	Filter (all models)
47307-6	462-8	Screw (all models)
47307-7	462-14	Lid gasket (all models)

Model 350 Peacekeeper Parts



* DOME SEAL, LID AND LID GASKET MAKE UP LID ASSEMBLY

Mark II Peacekeeper Parts



* LID AND LID GASKET MAKE UP LID ASSEMBLY



RV 463 & 348-17 Safety Valves For 2" Thread Part# 47269-1

For 3" Thread Part# 47269



Can be fitted to any system utilizing a Sentinel™ Mark I, Mark II or Model 100 Vacuum Controller, as well as systems using other vacuum controllers that regulate up to 150 CFM ASME. Relief valve provides a safeguard against high vacuum which can result from various system malfunctions. The Sentinel™ Relief Valve has an adjustable release point which can be set to the desired level for each system.

#8440 Mini-Regulator

KPA30-60 (20-400 ltrs./min.)
1-14 CFM ASME, up to 2-HP
A spring-loaded regulator that offers true stable vacuum. This is more than just a relief valve, and perfect for bucket systems.

Part# 47240



#8412 Servo Regulator

KPA30-60 (50-3500 ltrs./min.)
2-120 CFM ASME, up to 10-HP
A quality low cost regulator. Very reliable, sensitive, and easy to maintain.

Part# 47241

Parts

DESCRIPTION	PART#
Sm. Diaphragm	47241-L
Lg. Diaphragm	47241-W

