

## Safgard™ Parallel Milking Parlors



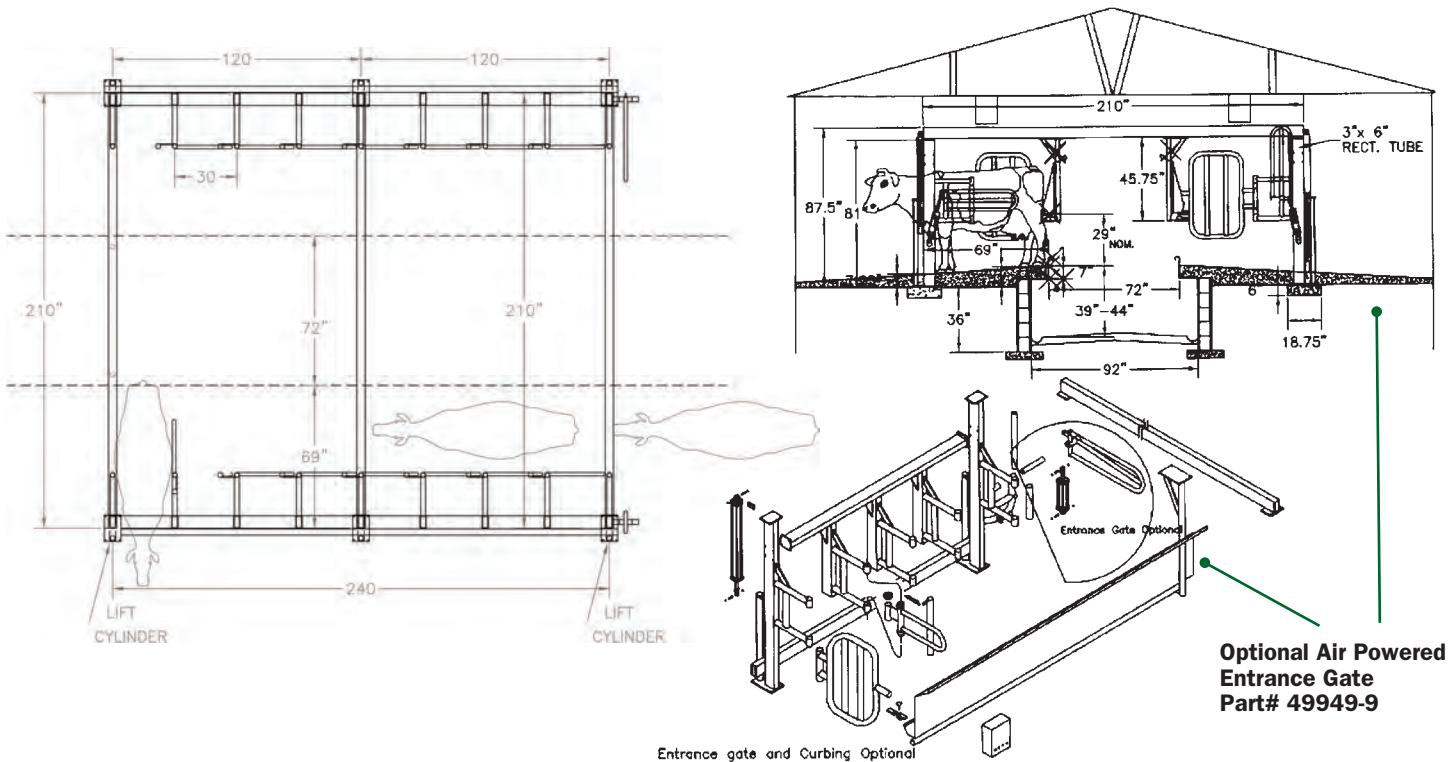
### Safgard™ Parallel Brisket Beam Drop Rail With Stainless Steel Trough

PART#	DESCRIPTION
49945-A	DOUBLE 4
49946-A	DOUBLE 8
49947-A	DOUBLE 12
49947-B	DOUBLE 16
49947-C	DOUBLE 20

Call for pricing on other sizes

- Durable Pre-galvanized material
- 3 x 6 Rectangular beam construction
- Completely free-standing parlor
- 12 gauge stainless steel back manure pan
- 30" cow spacing - increase cow numbers
- Air Package included
- Pre-assembly available at additional cost
- Optional air operated entrance gate must be ordered separately

Due to its unique design, the drop brisket all-exit parallel parlor can be fabricated in many configurations. Three, four, and five stall sections can be manufactured to your specific needs. Assemblies can be installed in just one day, an immense labor saver.



Optional Air Powered Entrance Gate Part# 49949-9

Entrance gate and Curbing Optional

## Safgard™ Herringbone Milking Parlors



### Safgard™ Cheek To Cheek Herringbone Parallel Drop Beam Rapid Exit 30" On Center

PART#	DESCRIPTION
49980	DOUBLE 4
49981	DOUBLE 8
49982	DOUBLE 12
49983	DOUBLE 16
49984	DOUBLE 20

- 2" Galvanized rails & suspenders
- 12 gauge stainless steel, heavy duty splashguards
- Rapid exit drop
- Air operated entrance gate - Standard
- Multiples of four only
- Exit gate manual (air operated gate optional)

### Safgard™ Stationary Brisket Bar Suspended Herringbone

PART#	DESCRIPTION
49840	DOUBLE 3
49841	DOUBLE 4
49842	DOUBLE 5
49843	DOUBLE 6
49844	DOUBLE 8
49845	DOUBLE 10
49846	DOUBLE 12
49847	DOUBLE 14

- 2" galvanized rails
- 2" suspender (post mounted is an option)
- 45" cow spacing standard
- 12 gauge SS heavy duty splash guards
- Manual gates standard - air operated gates available
- Only pipe mounted front to wall (Standard)

### Safgard™ Brisket Bar Front Only w/Mounting Standoffs

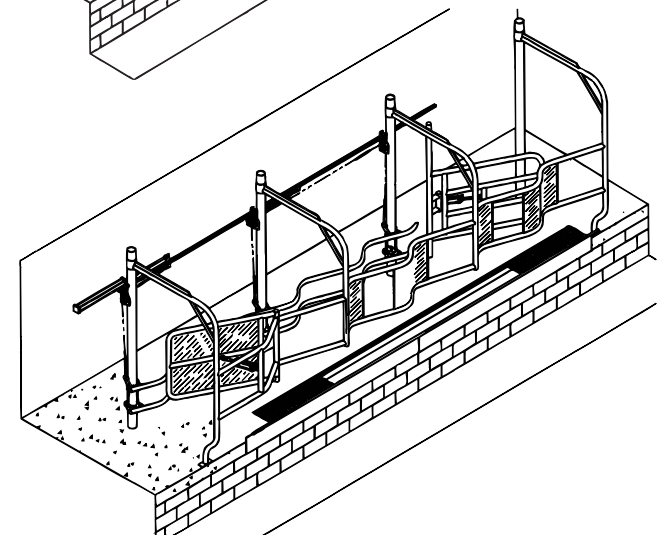
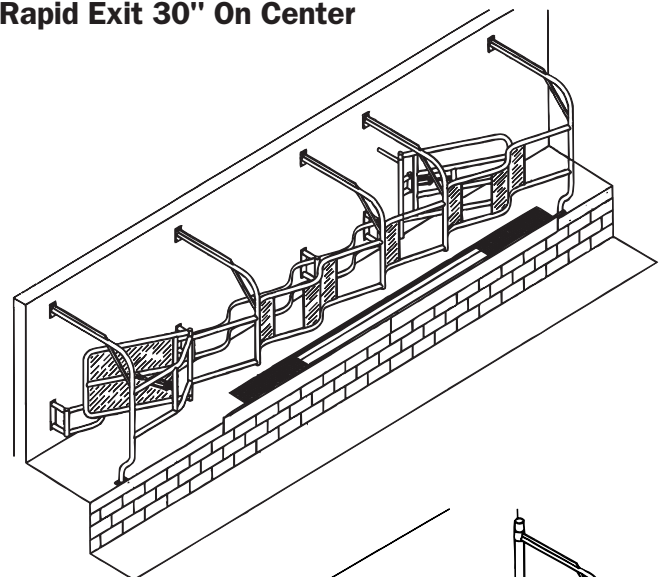
PART#	DESCRIPTION
49970	DOUBLE 4
49971	DOUBLE 5
49972	DOUBLE 6
49973	DOUBLE 8
49974	DOUBLE 10

- 2" galvanized rails
- 45" cow spacing standard
- No gates, backs, or posts included
- Only pipe mounted front to wall (Stand-off Included)
- To replace old mangers with briskets

### Safgard™ Brisket Bar Drop Rail Rapid Exit Herringbone

PART#	DESCRIPTION
49850	DOUBLE 3
49851	DOUBLE 4
49852	DOUBLE 5
49853	DOUBLE 6
49854	DOUBLE 8
49855	DOUBLE 10
49856	DOUBLE 12
49857	DOUBLE 14

- 2" galvanized rails
- 45" cow spacing
- 2" suspenders
- 12 gauge SS heavy duty splash guards
- Rapid exit
- Lower bars - cows walk over
- Air operated entrance gate standard
- Exit gate manual - air operated gate optional



# Parlor Stalls Mats & Fans

## Safgard™ Indexing Brisket-Bar Herringbone Parlors

Indexing brisket-bar parlors are available in three configurations. A front-end only update to replace existing mangers or worn brisket-bar assemblies. A complete parlor stall assembly with indexing brisket-bar. Or, an all-exit version of the indexing model is available. Allow 10' ceiling for all-exit.

### Squeeze Index Rapid Exit Herringbone Parlor

PART#	DESCRIPTION
49930	DOUBLE 4
49931	DOUBLE 5
49932	DOUBLE 6
49933	DOUBLE 8
49934	DOUBLE 10
49935	DOUBLE 12
49936	DOUBLE 14

- 2" galvanized rails
- 45" cow spacing standard
- 2" suspenders
- Air operated entrance and exit gates standard
- Air operated front end adjusts to fit cows
- Indexing Herringbone Parlor without rapid exit

### Trojan-Adjustable Squeeze Front End Herringbone

PART#	DESCRIPTION
49920	DOUBLE 4
49921	DOUBLE 5
49922	DOUBLE 6
49923	DOUBLE 8
49924	DOUBLE 10
49925	DOUBLE 12
49926	DOUBLE 14

- 45" cow spacing
- 2" suspenders
- 12 gauge SS heavy duty splash guards
- Adjustable squeeze front
- Rapid exit by raising
- Air operated entrance gate standard

### Trojan-Adjustable Squeeze Front End Only

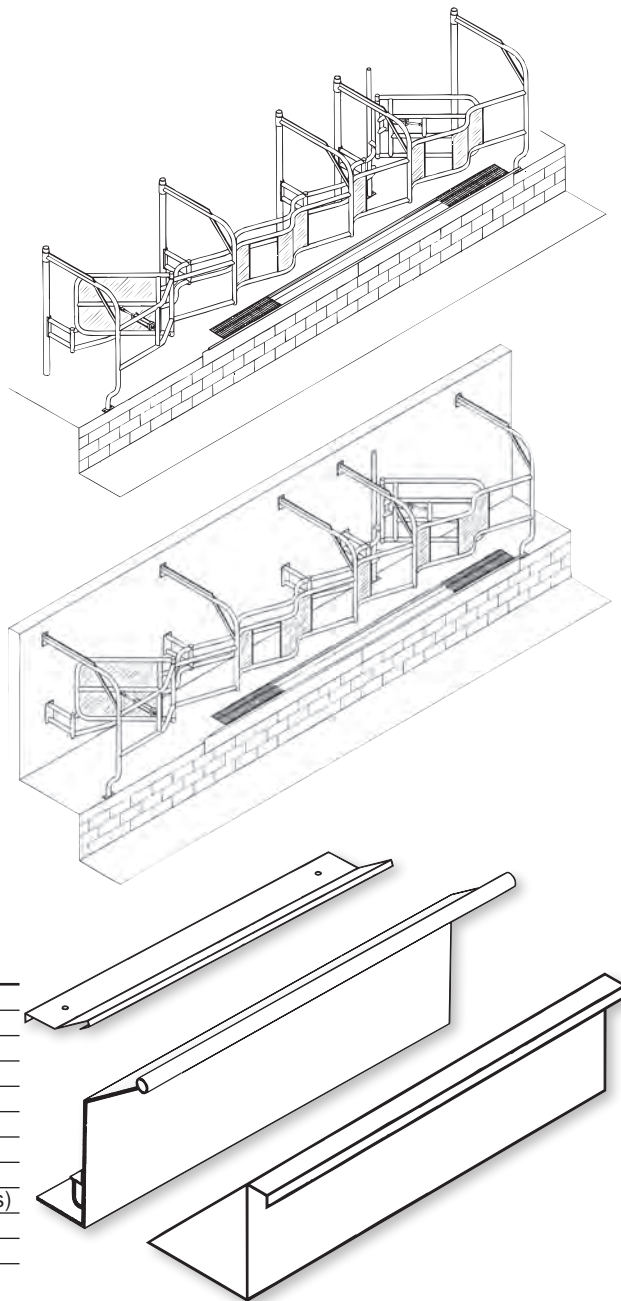
PART#	DESCRIPTION
49940	DOUBLE 4
49941	DOUBLE 5
49942	DOUBLE 6
49943	DOUBLE 8
49944	DOUBLE 10

- 2" galvanized rails
- 45" cow spacing standard
- No gates, backs, or posts

## Safgard™ Curbing Sections

PART#	DESCRIPTION
49830	10 gauge galvanized bolt on curbing - 44" long
49832	End cap for galvanized bolt on curb
49833	14 gauge stainless steel bolt on curbing - 44" long
49834	14 gauge stainless steel bolt on curbing - 88" long
49835	End cap for stainless steel bolt on curbing
49837	3/16" galvanized LA curbing (10 foot sections, standard)
49838	12 gauge stainless steel LA curbing (10 foot sections, standard)
49837-1	3/16" galvanized LA straight curbing for parallel stalls (10 foot sections)
49839	Galvanized angle iron with tabs for grating (sold by the foot)
49839-1	Stainless steel angle iron with tabs for grating (sold by the foot)

These are standard components - However - we can manufacture to your specifications!



## Safgard™ Milking Parlor Stall Air-Package Parts

DESCRIPTION	PART#
A212PD Pilot Valve (Gates and Squeeze)	49902
K214PS Main Valve (Rapid Exit)	49902-1
Toggle Valve	49903
3.25" x 8" Cylinder	49904
3.25" x 30" Cylinder	49905
3.25" x 30" Cylinder repair kit	49905-1
4" Roller and bearings only	49906-3
Repair kit for 4" x 48" Cylinder	49906-4
4.5" x 30" Cylinder for Parlor	49906-5
Flow Control Valve	49907
1/4" Air Control Tubing	49908

DESCRIPTION	PART#
1/2" Air Cylinder Tubing	49908-1
1/2" Air Coupling for Tubing	49908-2
1/2" Tee Fitting for Tubing	49908-3
1/4" NPT x 1/4" Pushlock 90 fitting	49908-4
1/8" NPT x 1/4" Pushlock 90 fitting	49908-6
Gate return spring for parallel	49949-0
1/4" x 1/4" x 1/4" Pushlock NPT tee fitting	49908-8
1/4" x 1/4" x 1/4" Pushlock tee fitting	49908-9
1/4" Pushlock x 1/8" NPT Straight fitting	49908-A
1/4" Pushlock x 1/4" Pushlock 90 fitting	49908-B

## Contact Schlueter for Complete Milking System Packages

- Please call or write us for complete drawings on stalls.
- Special sizes, configurations, and stall quantities are available.
- Prices do not include optional curbing, grates, air compressors or hydraulics.

## Safgard™ Complete Dairy Systems

## Rotaflo™ Rotary Parlors

(Stalls only-no milking equipment)

DESCRIPTION	PART#
24 Stall RotaFlo - Less milking equip.	49956
32 Stall RotaFlo - Less milking equip.	49957
40 Stall RotaFlo - Less milking equip.	49958
50 Stall RotaFlo - Less milking equip.	49959



### Rotaflo™ Parts

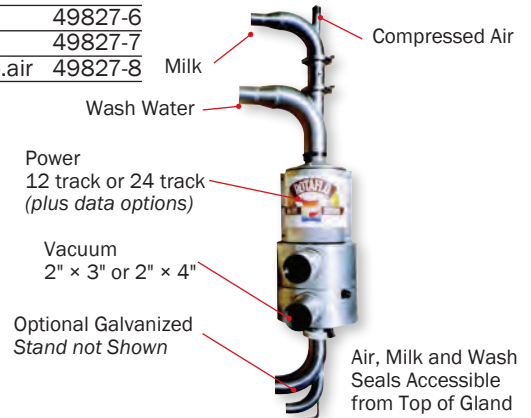
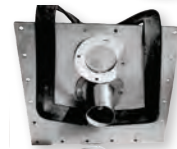
DESCRIPTION	PART#
Rotaflo Drive Module Complete with Oil	49825
Rotaflo Gearbox with Oil	49825-1
Rotaflo Locator Axle	49825-2
Rotaflo Bridge O/R Axle w/ nipple	49825-3
Rotaflo Drive Shaft Bushing Mounting Long	49825-4
12 Track CuGraphite Brush Set	49826-1
12 Track Brush Post and Arms	49826-2
12 Track Slip Ring Complete	49826-3
24 Track CuGraphite Brush set	49827-1
24 Track Brush Post and Arms	49827-2
24 Track Slip Ring Complete	49827-3
Rotaflo Vacuum Teflon Bearings Plug Set	49828
Rotaflo Vacuum Seals Set	49828-1
Milk Swivel Seal Set	49828-2
Milk Swivel Teflon Brush Set	49828-3
4"/5" flex. cam-lock drain swivel upgrade	49828-4
Drive wheel	49828-5
Locator wheel	49828-6
All rubber drive shaft bottom bushing	49828-7

## Rotaflo™ Glands

DESCRIPTION	PART#
Rotaflo gland 12 track/4x3"/2" Milk	49826
Rotaflo gland 12 track/4x4"/2" Milk	49826-A
Rotaflo gland 24 track/4x3"/2" Milk	49827
Rotaflo gland 24 track/4x4"/2" Milk	49827-A

## Rotaflo™ Upgrade Options

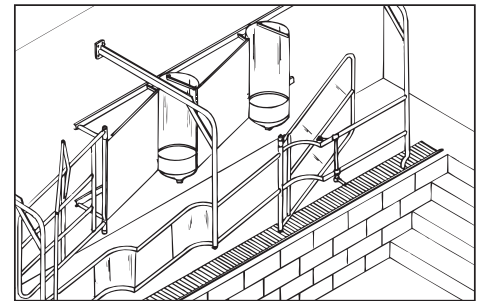
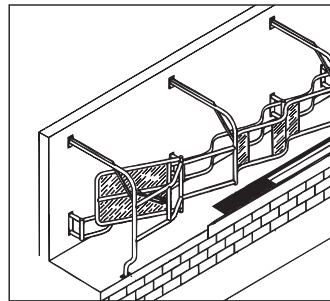
DESCRIPTION	PART#
3" milk swivel	49827-4
2" milk / compressed air swivel	49827-5
3" milk / compressed air swivel	49827-6
2" milk / 2" discard or wash	49827-7
2" milk / 2" discard or wash / comp.air	49827-8



Air, Milk and Wash Seals Accessible from Top of Gland

## Safgard™ Gates And Shields

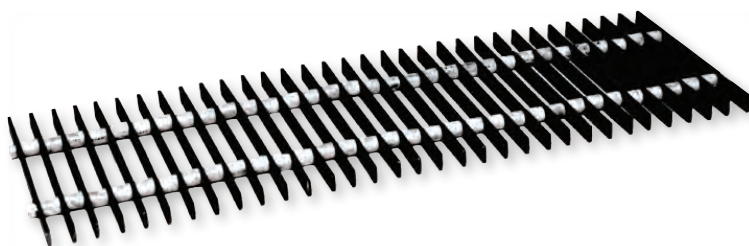
DESCRIPTION	PART#
SS Feed Bowl for 49881 Manger	49882
Double H.D. Butt Shield 2 <sup>3</sup> / <sub>8</sub> " w/SS Splash Shield	49893
Entrance Gate 2 <sup>3</sup> / <sub>8</sub> " w/manual linkage	49894
Exit Gate 2 <sup>3</sup> / <sub>8</sub> " w/manual linkage	49895
Parallel Parlor Chop Style Gate	49949-9



### 15" x 45" Solid Welded Grate

Part# 44439

- 1/4" thick
- 1" wide



### 4-Step Parlor Steps with Handrails.

Part# 49878

- 30" wide x 32" high, will fit most parlor pits
- Dual hand-rails
- Galvanized construction
- Non-slip stepping surface



## Flaco™ Goat and Sheep Milking Parlors

**Goat and Sheep Milking Parlors**  
**Rapid Exit and Constructed of Galvanized Steel**

**DESCRIPTION**

- |                              |
|------------------------------|
| Goat Milking Parlor, 1 X 12  |
| Goat Milking Parlor, 1 X 18  |
| Goat Milking Parlor, 1 X 24  |
| Sheep Milking Parlor, 1 X 12 |
| Sheep Milking Parlor, 1 X 18 |
| Sheep Milking Parlor, 1 X 24 |

\*Call for Pricing Details.

**Milking Position**



**Rapid Exit Position**



## Safgard™/Borco Carousel For Goats & Sheep

\*Call for Pricing Details.

Available Configurations - Call for details

- 38 Stall
- 64 Stall
- 84 Stall

- Milk up to 1000 goats per hour with one person
- All galvanized steel unitized modular production
- On-board feeders based on animal production
- Multiple entrances with goat trainers
- Variable speed control with safety stops
- MilkWatch milk meter/detacher system with full time ID
- MilkWatch management program includes goat health
- Automatic milking startup with max milking time controls
- Automatic repeat rotation control



## Goat And Sheep Stanchions And Parlors

### Goat And Sheep Parlors

Hot Dipped galvanized in 12 stall pre-fabricated sections. These smooth rolling parlor packages install in a matter of hours on your existing concrete platform. Single 12 fits into an area of 14' wide x 10' deep. Call for more details and dimensional data.

#### Features Include

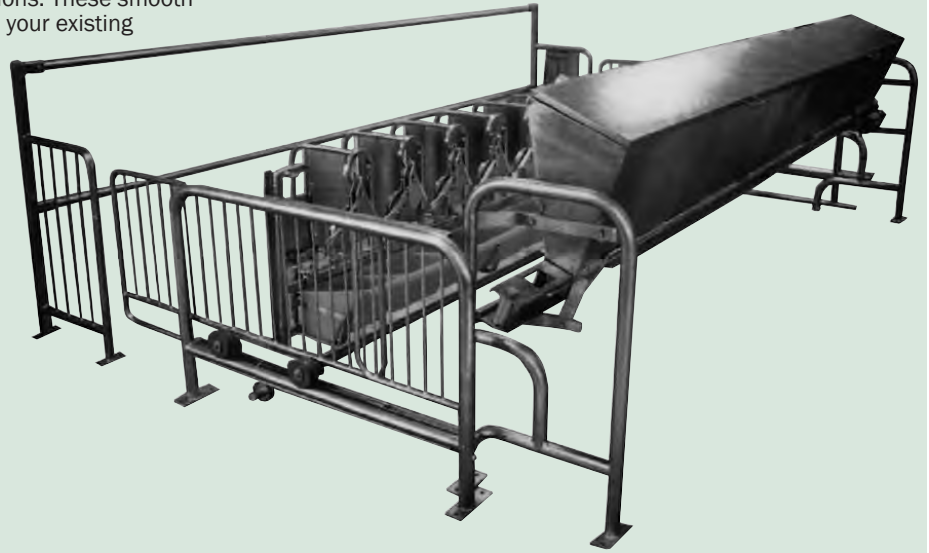
- Entrance and exit gates
- Manual crank moves "Manual Express Parlor" toward pit area
- Motor moves "Motorized Express Parlor" towards pit area
- Hot Dipped galvanized

#### Manual Express Parlor

PART#	DESCRIPTION
49778	DOUBLE 12
49779	DOUBLE 24

#### Motorized Express Parlor

PART#	DESCRIPTION
49775	DOUBLE 12
49776	DOUBLE 24



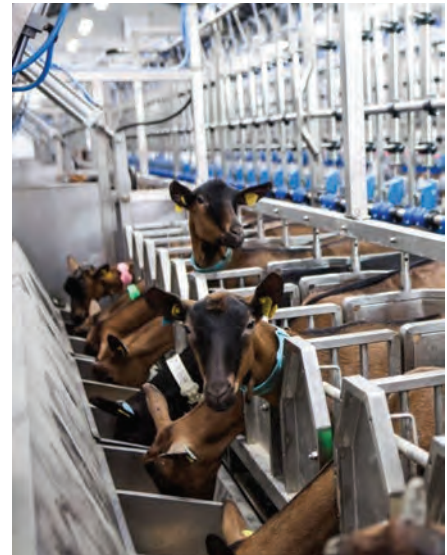
## Goat And Sheep Milking Systems

### Goat And Sheep Parlors

Manufactured Metal Construction with the latest laser technology. Goat and Sheep G and S Milking Systems made with hot dip galvanized or antimagnetic stainless steel construction, featuring easy installation, manual or pneumatic side entrance gates with roller guides for easy entrance into stall, pneumatically operated feeding tank giving precise dosage. Advantages are easy movement of animals, good milker view with back fence tubes protecting them from kicks, comfortable animals from possibility of supplementary feeding, which reduces milk time and increases milk yields, and rapid exit of animals controlled by air valves and pneumatic circuit.

#### Features Include

- Optimal Operation
- Animal Comfort
- Friendly Design
- Easy entrance and animal movement
- Less building space needs - less expenses
- Durable Stall Construction
- Heavy Duty construction parlor
- Designed for 24/7 operation
- Immediate animal recognition
- Suitable for pregnant or large animals
- Available in 330mm/367mm/400mm position widths
- Possibility to treat the animals in stall
- Inexpensive spare parts
- Lower cost compared to other parlor types



### Goat and Sheep Parlors with Feeding Tank

DESCRIPTION	PART#
G&S 2X12 Galv. Parlor w/ Feeding Tank	49790
G&S 2X12 Stainl. Steel Parlor w/ Feeding Tank	49791
G&S 2X16 Galv. Parlor w/ Feeding Tank	49792
G&S 2X16 Stainl. Steel Parlor w/ Feeding Tank	49793
G&S 2X18 Galv. Parlor w/ Feeding Tank	49794
G&S 2X18 Stainl. Steel Parlor w/ Feeding Tank	49795
G&S 2X20 Galv. Parlor w/ Feeding Tank	49796
G&S 2X20 Stainl. Steel Parlor w/ Feeding Tank	49797



## Comfort-Plus Parlor Mats

COLOR	PART#
White	47451
Blue	47452
Gray	47453
Green	47454
Black	47455

- Made from 100% soft virgin PVC
- NEW slip free surface
- Easy cleaning, can be rolled up without uncoupling

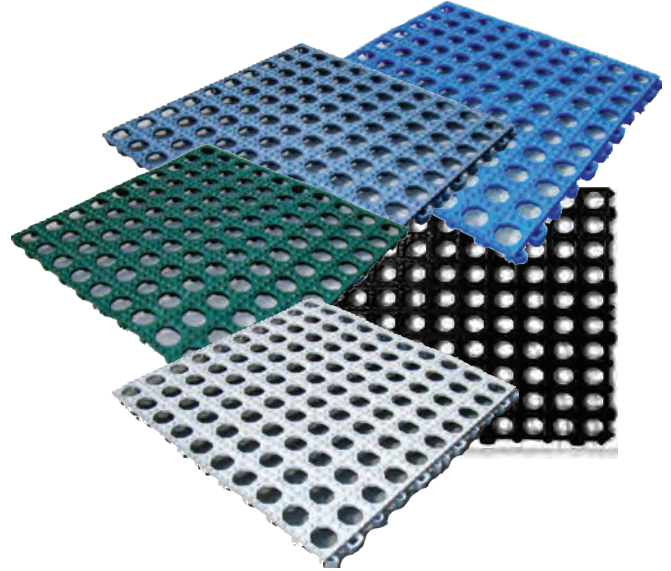
### PRODUCT SPECIFICATIONS

20" x 20" x 1" high., 50cm x 50cm x 24mm  
 Load capacity is 5200 lbs/sq. ft.  
 10 Mats per case. 40 lbs/case, 4 lb/mat

To Calculate Correct Number of Mats:

1. Measure the width x 12 ÷ 20 = Rows Down
2. Measure the length x 12 ÷ 20 = Rows Across
3. Multiply the above numbers for total mats

The anti-fatigue mat is a multi-purpose, interlocking, floor system. The Comfort Plus mat is like walking on air. The surface has a slip free feature added for operator safety. A high profile creates excellent insulation from cold damp floors. It has outstanding drainage capability due to the solid and round feet, leaving no place for dirt or debris to hide. The grid is open to allow free air movement and eliminate undesirable odors.

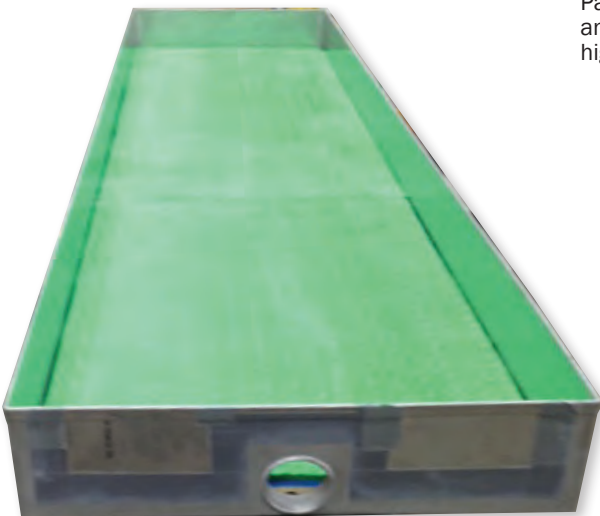


## Stainless Steel Footbaths

### Features Include

- 120" x 30" x 7"
- 3" Drain Hole
- 12 Gauge Stainless Steel
- Made With 2 Handles
- Floor Matting Included
- 2B Finish
- Call for additional sizes

**Safgard™ Stainless Steel Footbath**  
**Part# 44435**



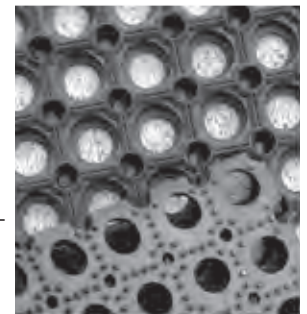
**39" x 59" Worker-Rest Parlor Mat**  
**Part# 44448**

- Anti-slip
- Lightweight
- Easily cleaned

### Product Specifications

Size: 1 meter (39.4") x 1.5 meters (59")  
 Thickness: 7/8"  
 Weight: 38 lbs.  
 Color: Black

Surface pattern: Top (hollow octagonal); Bottom nubs  
 Worker-Rest Parlor Mats are all natural, super comfy rubber tiles with drain holes (required by some inspectors). Parlor workers will experience the ultimate in comfort and safety. Mats are bound to pay for themselves with higher production and fewer work-stress injuries.



**Poly Cow Foot Bath**  
**Part# 49948**

78" x 32" x 6"



Durable one-piece polyethylene Cow Footbath. Molded ribs in the base cause the hoof to spread, allowing deep penetration of medicated solutions. These ribs also add support and traction to the Cow Footbath. For best results, use two. The first bath containing a pre-cleaning rinse and the second for the medication. This will greatly extend the life and usage of the medicated solution.

## Triple Layer EVA Cow Mat

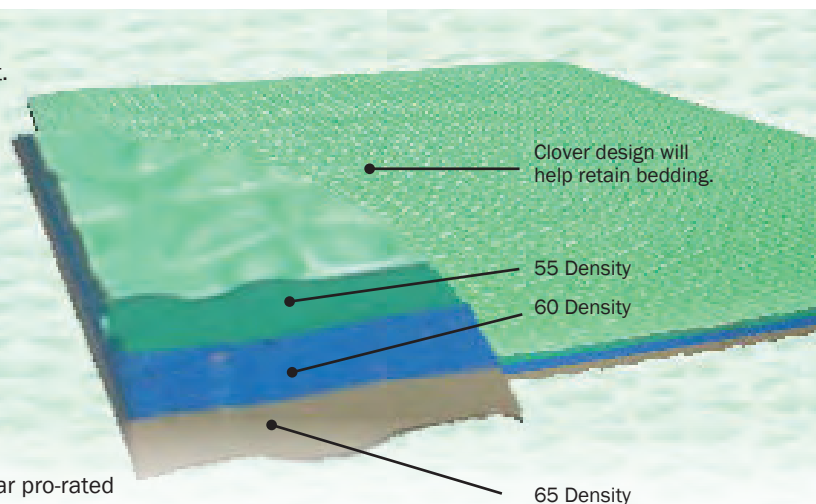
### Triple Layer EVA Mat

Part# 44440

The triple layer EVA mat is an air impregnated vinyl product. Vinyl is a very durable product that becomes soft when impregnated by air. The lower the density, the softer the mat will become. Vinyl expands and contracts in response to heat or cold. The top green layer is designed to be soft for additional cow comfort. The middle layer is designed to bond the top and bottom layers and the bottom layer is designed to control expansion and contraction to improve wear characteristics when placed on concrete.

### Features Include

- EVA has an R40 insulation value
- EVA is extremely water resistant
- Mat weighs 31 lbs for easy handling
- Standard size 46" x 72"
- Installs easily drilling 4 holes across the front
- Drive in 4 tap cons to finish the job
- EVA mat has 5 year warranty\* 3 year unconditional, 2 year pro-rated
- Smooth surface means healthier hocks
- Closed cell EVA product cannot harbor bacteria

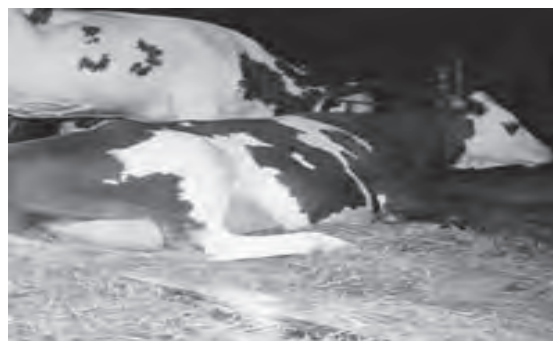


## Mistral Bedding Conditioner

Can be used in "Certified Organic" applications! Mastitis is the most costly disease in dairy cows. Estimates of total losses due to mastitis range from \$150 to \$300 / cow / year.

Studies suggest that the teat canal is more easily penetrated by bacteria. High numbers of bacteria present in the bedding, prolonged contact of the udder, plus the adherence of bedding material on teat skin will increase the risk of environmental mastitis. Risk of mastitis is directly linked to the level of contamination of the litter.

Moisture is the main risk factor for environmental mastitis. Temperature of the litter is the second factor to consider. Oxygen will encourage bacterial growth, as E-Coli and Streptococcus are aerobic bacteria. MISTRAL will keep the area surrounding the udder dry.



SIZE	PART#
25 KG/ 55-lb. bag (40 units per pallet)	44420

## Safgard™ Parlor Door Systems

### Manual Parlor Door

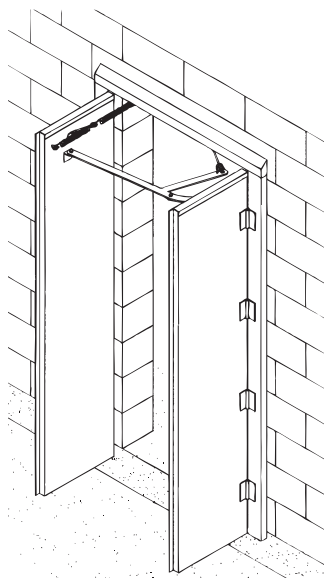
For both entrance and exit openings. This dual-action door gently handles cows for efficient control of movement. Door features: dual action, easy operation, galvanized metal cover for rust resistance. Fits 32" doorway, manual door operation (standard), comes complete with door, hinges, manual operator, pulleys, cord and mounting hardware.

**Milking Parlor Cow Door Sets Complete**  
Part# 49950

**Parlor Door Sets Only with Hinges**  
Part# 49951

**Parlor Door Manual Operator Accessory Kit**  
Part# 49952

**Spring Only**  
Part# 49952-1



Fits rough opening 32" x 80"

### Safgard Vinyl Strip Door

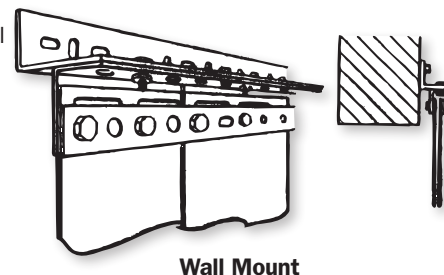
Part# 49955

Designed as a Supplemental Parlor Door

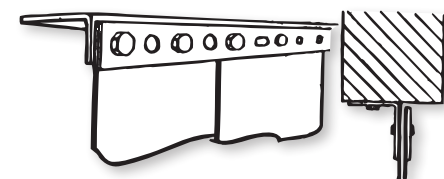
- Saves wear and tear on electric door operator.
- Lowers energy cost—saves heating and cooling.
- Fits on inside or outside parlor wall.
- UV stabilized to prevent yellowing.

### Advanced Construction

The smoothly beveled, rounded edges will not cut, snag or scratch anything coming into contact with them. The strips' concave-convex curvature promotes a tighter seal, yet spreads apart easily for passage. 8" wide strips assembled for 2" overlap. One pull to open, one pull to close.



Wall Mount



Header Mount

Units Include Mounting Hardware  
Fits Size 36" x 84" Standard Cow Door  
Custom Sizes Available Upon Request.

# Parlor Stalls Mats & Fans

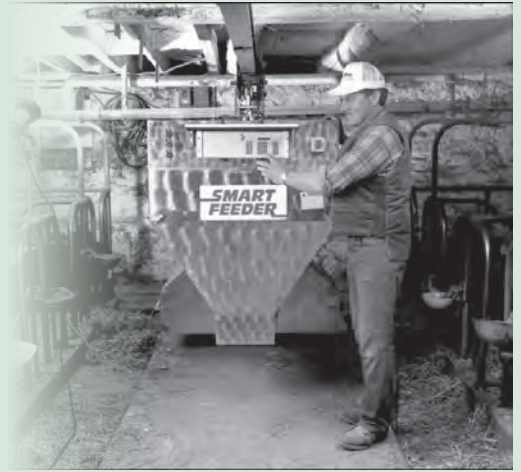
## SMART Stanchion Feeder

Standard 2-Feed SS Feeder

Part# 92035S

### How it works

At preset times, or by manual start, the SMART FEEDER sets off from its "home" position then travels to the first cow and stops. Tapered augers in the feed hopper deliver feed to the discharge conveyor. The first cow's own ration of feed is precisely measured by weight. When the exact amount of feed has been weighed, the auger stops and the conveyor delivers the feed to the cow. After the last cow is fed, the SMART FEEDER returns to home base and automatically hooks itself into a battery charger. Under the feed conveyor a load cell measures every portion accurately. The SMART FEEDER will feed automatically at up to 6 preset times a day. Frequent, regular feeding improves digestion. The hopper carries enough feed for 80 cows for 1 day.



## CalfGard Calf Feeder

Part# 80050

### How it works

Designed for small groups of calves. Mixes fresh, warm milk replacer as needed. Calves drink only when they have liquid credit and they cannot overeat. Raising healthy, happy calves can be easy.

### Features:

- Feeds up to 25 calves
- Each calf wears an eartag
- 50 lb milk powder hopper
- 2.5 gallon water heater
- 1 Feeding station
- Quantity per day can be set per calf
- Shows how much each calf drank today and yesterday
- Use any kind of milk replacer
- Maintenance takes only 5 minutes per day
- Includes auto-wean and starter helper functions



## Stanchion And Stall Clamps & Accessories

### T-Stall Clamps

Part# 44368

1 $\frac{5}{8}$ " x 1 $\frac{5}{8}$ "



Part# 44368-1

2 $\frac{3}{8}$ " x 1 $\frac{5}{8}$ "



### 1 Bolt Tee Clamp

Part# 44275

1 $\frac{5}{8}$ " x 1 $\frac{5}{8}$ "



### Bulldog Clamp

Part# 46104

1" to 1 $\frac{5}{8}$ "



### Column Tee Clamp

Part# 44277

1 $\frac{5}{8}$ " x 4"



### Stanchion Hanger

Part# 44279

1 $\frac{5}{8}$ " Round



### Top Rail Clamp

Part# 44281

EZ Curve - 1 $\frac{5}{8}$ " x 1 $\frac{5}{8}$ "



### 1 $\frac{1}{2}$ " Flange Clamp

Part# 44276



### Stanchion Hanger

Part# 44280

$\frac{3}{4}$ " x 1 $\frac{1}{4}$ "



### Save-A-Stall Anchor

Part# 44360

Repairs rusted or broken-off barn equipment.



### Arch Tie Chain Push-In

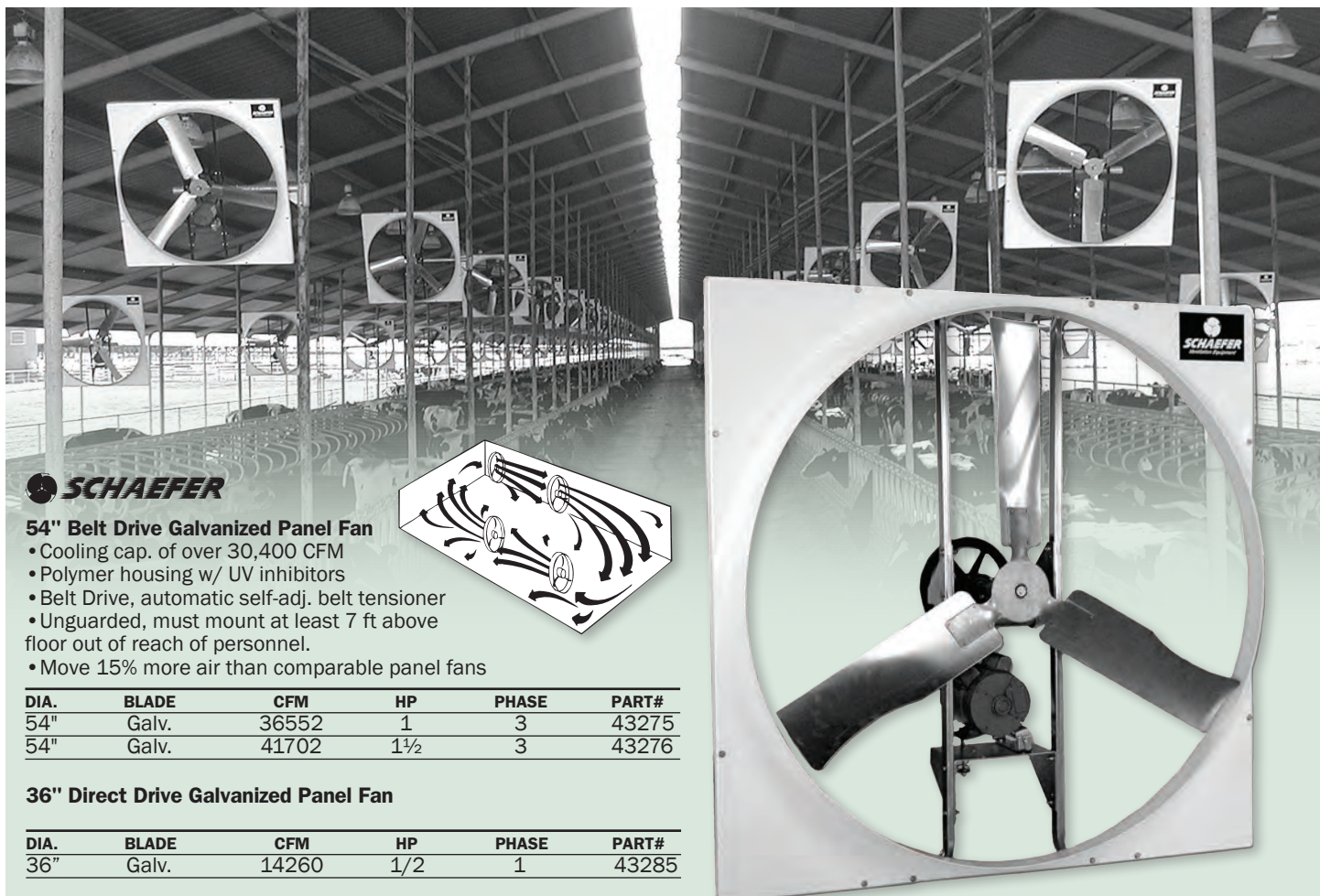
Part# 44282



### Stanchion Chain

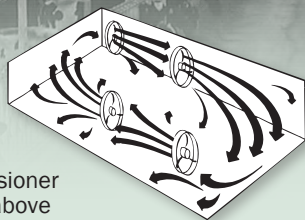
Part# 44283 - 4 Links





### 54" Belt Drive Galvanized Panel Fan

- Cooling cap. of over 30,400 CFM
- Polymer housing w/ UV inhibitors
- Belt Drive, automatic self-adj. belt tensioner
- Unguarded, must mount at least 7 ft above floor out of reach of personnel.
- Move 15% more air than comparable panel fans



DIA.	BLADE	CFM	HP	PHASE	PART#
54"	Galv.	36552	1	3	43275
54"	Galv.	41702	1½	3	43276

### 36" Direct Drive Galvanized Panel Fan

DIA.	BLADE	CFM	HP	PHASE	PART#
36"	Galv.	14260	1/2	1	43285



### Versa-Kool Air Circulation Fans

DIA.	CCFM	VOLTAGE	WT.	PART#
36"	12709	115/230	70 lb.	43253
36"	11469	230/460-3	70 lb.	43254

### Versa-Kool Air Circulation Fans

DIA.	CCFM	VOLTAGE	WT.	PART#
12"	1554	115/230	25 lb.	43250

Ideal for small nurseries and calf barns.

20" 5156 115/230 38 lb. 43251

Perfect for medium size agricultural buildings w/low ceilings.

24" 7748 115/230 46 lb. 43252

The Barn Kooler® "System" incorporates a series of fans and controls into an integrated system that is used for both high velocity air circulation & cooling during the summer and gentle, draft-free movement during the winter months.

### Replacement Motors

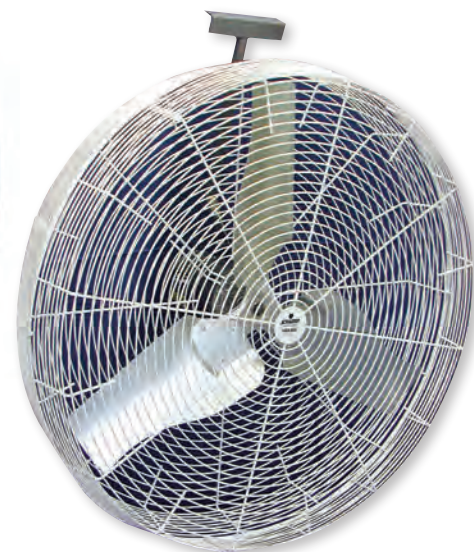
SIZE	VOLT-PHASE	PART#
20"		43251-2
24"		43252-2
36"	115/230-1	43253-1
36"	230/460-3	43254-1

### Replacement Blades

SIZE	DESCRIPTION	PART#
20"	Replacement blade	43251-1
24"	Replacement blade	43252-1
36"	Replacement blade	43253-2

### Features

- Reduces heat stress
- Increases production levels
- Helps control insects
- Helps eliminate condensation



### Mist Kits

ITEM	DESCRIPTION	PART#
MK-100	4 Nozzle kit for 20" - 24" fans	43255
	Brass Replacement Nozzle	43255-1
MK-200	6 Nozzle kit for 36" fans	43256

### 36" Direct Flow Basket Fans

DIA.	CCFM	VOLT-PHASE	WT.	PART#
36"	13324	115/230-1	70 lb.	43272
36"	13151	230/460-3	70 lb.	43273

# Parlor Stalls Mats & Fans



## Polyethylene Flush Mount Exhaust Fans

- Energy efficient polyprop. blades
- Heavy molded polyethylene housing
- Heavy, PVC coated, wire guards
- Operating voltage 115/230 HD
- PVC shutters with nylon bearings



### Single/Variable Speed Fan Specs.

PART#	BLADE	HP	RPM	CFM
43260	9" dia.	1/6	3000	1091
43261	12" dia.	1/3	1725	1600
43262	16" dia.	1/3	1720	3085
43263	20" dia.	1/3	1720	3530
43264	20" dia.	1/2	1720	4966



## Versa-Kool® Portable Mancooler

- Cooling cap. of over 11,000 cfm.
- HD white polyethylene housing
- Direct drive (No belts or pulleys)
- TEFC 115/230v ball bearing motor
- Supplied with 115v power cord

PART#	HP	RPM	BLADE DIA.
43268	1/2	840	36"

## Manual Variable Speed Barn Fan Control Heating Or Cooling

### Part# 43265

- 12.5 amp - 115/230 volt
- Water tight enclosure



## Single Speed Barn Fan Thermostat Heating Or Cooling

### Part# 43701



## Automatic Variable Speed Barn Fan Control Heating Or Cooling

### Part# 43266

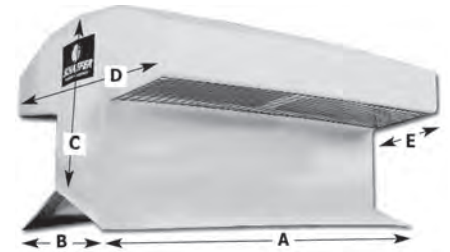
- 10 amp - 115/230 volt
- Adjustable, variable speed differential
- 3 Sec. Full power turn-on (minimizes ice-up)
- Externally adjustable auto on/off



## High Volume Roof/Ridge Inlet and Exhaust Fan

### Part# 43286

- Exhausts hot air in summer, and an inlet for fresh air in winter
- For roofs pitches 2/12 to 6/12
- Dimensions: A=50 1/2", B=20 3/4", C=20", D=36 1/2", E=12 1/4"
- Flange Ends=2 1/4 Flange Sides=5"



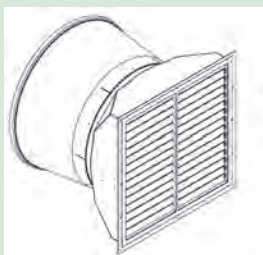
## 57" Fiberglass Exhaust Fans

- Fiberglass exhaust fans exhaust more air at higher static pressures
- Fiberglass housing UV protected
- Equipped with one-piece polyethylene cone, corrosion resistant
- Made in the USA with high-quality parts
- Fit side by side in dairies with standard 12, 18 and 24 foot post spacing

### Single/Variable Speed Fan Specs.

PART#	DRIVE	WINGS	HP	RPM	CFM
43280	Belt	3	2	589	33,600
43284	Direct	4	2	523	33,800

- Both 3-phase models, VFD compatible
- Three or Four Wing Galvanized Blades
- RPMs and CFMs Shown at 0.05" SP
- Direct-Drive HV High Velocity delivers up to 34,000 CFM
- Belt-Drive System includes an automatic self-adjusting belt tensioner
- 15 year housing warranty and 2 year limited warranty



Rough in dimensions: 62.5" x 62.5"  
Cone major diameter: 67"  
Fan Depth: 64" from mounting flange to outside end of cone





### Webtrol Booster Pumps

Heavy Duty Motors designed for continuous operation. Motors for 1/2 HP and 3/4 HP are dual voltage—115/230, wired for 115 volts; while the motor for 1 1/2 HP is wired for 230 volts.

MODEL	HP	MAX PSI INCREASE	PART#
L10B8	1/2	100	42281
L5B17	3/4	180	42280
5B1528	1 1/2	300	42282

All Webtrol units include a 25' x 3/4" 300 PSI hose, hose adapter and nozzle.

### Replacement Assemblies for Webtrol Pumps

DESCRIPTION	SIZE	PART#
10B8RA	For 1/2 HP	42287
5B17RA	For 3/4 HP	42288
(Units mfg. before Jan. 1987)		
5B17RA-1	For 3/4 HP	42288-1
(Units mfg. after Feb. 1987)		

### High Pressure Hose

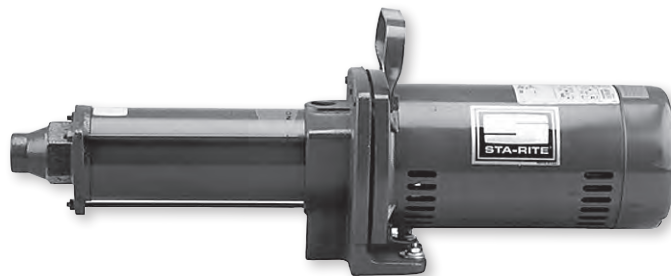
DESCRIPTION	PART#
25' x 3/4" - 300 PSI	42284
50' x 3/4" - 300 PSI	42286

Male and female ends.



### Standard C-125 Nozzle Part# 42285

Takes 3/4" male hose fitting. Reversible tip for spray or stream. Equipped with hold-down ring.



### Sta-Rite Booster Pump

Maximum added pressure 60 PSI

DESCRIPTION	PART#
HP7C	1/2 HP
HP20F	1 1/2 HP - 220 Volt

### 1/2 HP Sta-Rite Pump Parts

DESCRIPTION	PART#
U109-118 Shaft seal pkg.	42329
N20-26 Gasket seal plate	42329-0
U9-49 "O" ring	42329-1
P43-14D Washer submersible pump	42329-3
P23-18A Sleeve	42329-4
P101-3P1 Diffuser assy.	42329-5
P105-16P1 Impeller assy.	42329-6
P43-11SS Spacer	42329-7
C110-35E Booster pump shaft inertia	42329-8
U30-573SSN Hex cap with nylon	42329-9
Rebuild kit 1 1/2 HP Sta-Rite	42321-1
Rebuild kit 1/2 HP Sta-Rite	42332

### Parts For Red Jacket Jetsweep Booster Pump

DESCRIPTION	PART#
168-284	Overhaul kit 1/2 HP
076-183	Seal 1 1/2 HP
238-006-5	Discharge Hose

### Adapters Part# 42325

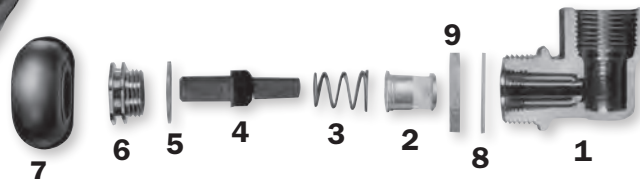
3/4" N.P.T x 3/4" G.H.T.  
Pkg. 85



### Painted Magnum Water Bowl

#### Parts

ITEM	DESCRIPTION	PART#
1	3/4" brass elbow	44388
2	Filter	44384
3	Spring	44383
4	Std water valve	44395
5	Nylon washer	44381
6	Seat	44379
7	Deflector	44378
8	Nylon washer	44387
9	Brass nut	44386



### Parts For Magnum Painted & LaBuvette™ Enameled Bowls

DESCRIPTION	PART#
Valve repair kit (Complete)	44385
Shaft for nose plate	44389
Lock nut for shaft	44390
SS Nose plate	44391
Back clamp	44392